

WIRING DEVICES	
SYMBOL	DESCRIPTION
#	DUPLEX RECEPTACLE, GROUNDING TYPE, RATED 20A, 125V "W" - INDICATES WEATHERPROOF (TYP FOR WIRING DEVICES) "WP" - INDICATES WEATHERPROOF (TYP FOR WIRING DEVICES) "C" - INDICATES COUNTER HEIGHT (TYP FOR WIRING DEVICES)
	SHADING INDICATES GROUND FAULT CIRCUIT INTERRUPTER
# WP	DOUBLE DUPLEX RECEPTACLE, GROUNDING TYPE, RATED 20A, 125V
	ELECTRICAL FLEX CONNECTION TO EQUIPMENT
	JUNCTION BOX : NOTE: EC TO MAKE FINAL CONNECTION TO EQUIPMENT. (TYP)
SPTO	SINGLE PERSON TRAIN OPERATOR
CC	COMMUNICATIONS CABINET
VMS	VARIABLE MESSAGE SIGN
PAT	PASSENGER ASSISTANCE TELEPHONE
EG	ELECTRIC GATE
SN	MBTA "LOLLYPOP" SIGN
FVM	FARE VENDING MACHINE
HD	HAND DRYER
FD	FOOD WASTE DISPOSER

BRANCH CIRCUIT & FEEDER LEGEND

SYMBOL	DESCRIPTION
PP1-(X)	BRANCH CIRCUIT HOME RUN. 2#12 & 1#12G IN 3/4" MINIMUM. PP1-(1) INDICATES PANEL AND CIRCUIT DESIGNATION FROM WHICH HOME RUN SHALL ORIGINATE. EACH CIRCUIT SHALL BE 20A-1P (20AMP SINGLE POLE) UNLESS NOTED OTHERWISE.
PP1-(X)	VERTICAL CONDUIT DESIGNATION. SOLID CIRCLE INDICATES A CONDUIT TURNING DOWN. OPEN CIRCLE INDICATES A CONDUIT TURNING UP.

POWER DISTRIBUTION LEGEND

SYMBOL	DESCRIPTION
	PANELBOARD, REFER TO SCHEDULE OF PANELBOARDS. D41 INDICATES PANEL NAME.
	DRY TYPE TRANSFORMER SIZE AS REFERENCED IN ONE-LINE DIAGRAM

ONE-LINE LEGEND

SYMBOL	DESCRIPTION
	CIRCUIT BREAKER, FIXED "100AF" - INDICATES FRAME SIZE "80AT" - INDICATES TRIP
	DISCONNECT SWITCH, 3 POLE, IN NEMA TYPE 1 ENCLOSURE, UNLESS OTHERWISE NOTED "30AF" - INDICATES 30AMP FRAME "15AT" - INDICATED 15AMP TRIP
	GROUND CONNECTION
	TRANSFORMER - "T3" - INDICATES TAG REFERENCED IN THE TRANSFORMER SCHEDULE
	3 PHASE, 3 WIRE DELTA CONNECTION
	3 PHASE, 4 WIRE WYE SOLIDLY GROUNDED
	PANELBOARD "PP1" - INDICATES PANELBOARD NAME REFER TO PANELBOARD SCHEDULES FOR ADDITIONAL INFORMATION

EXISTING EQUIPMENT LEGEND	
SYMBOL	DESCRIPTION
XM	EXISTING EQUIPMENT TO REMAIN
X	EXISTING EQUIPMENT TO BE REMOVED
XR	EXISTING EQUIPMENT TO BE RELOCATED
XE	EXISTING EQUIPMENT TO BE REMOVED AND NEW EQUIPMENT TO BE INSTALLED IN SAME LOCATION UTILIZING EXISTING RACEWAY
XB	EXISTING BREAKER TO BE REMOVED AND CONNECTED EQUIPMENT TO UTILIZE NEW BREAKER WITHIN NEW PANEL. EQUIPMENT TO UTILIZE EXISTING CONDUIT AND CONDUCTOR. CONDUIT AND CONDUCTOR TO BE EXTENDED TO THE NEW PANEL IF NECESSARY.
	EXISTING EQUIPMENT TO REMAIN FOR INFORMATION ONLY - (XM)
	EXISTING EQUIPMENT TO BE REWORKED - (X, XR, XE)
	INDICATED BY SYMBOL WITH DASHED AND IN FUNCTION LINE TYPE

GENERAL SYMBOLS

SECTION VIEW	
	DIRECTION OF VIEW
	SECTION LETTER / NUMBER
	DWG NUMBER ON WHICH SECTION IS SHOWN
CALL OUT	
	DETAIL LETTER / NUMBER
	DWG NUMBER ON WHICH SECTION IS SHOWN
	EQUIPMENT TAG (REFER TO MECHANICAL AND PLUMBING CONNECTION SCHEDULE)
	EQUIPMENT DESIGNATION
	EQUIPMENT REFERENCE NUMBER (TYP)
	SHEET NOTE TAG
	SHEET KEYNOTE TAG

GENERAL NOTES:	
1	COORDINATE ALL EXACT DEVICE LOCATIONS AND MOUNTING HEIGHTS WITH ARCHITECTURAL DWGS PRIOR TO ROUGH-IN. ALL DEVICES SHALL BE MOUNTED IN ACCORDANCE WITH THE LATEST REQUIREMENTS OF THE ACCESSIBILITY CODE.
2	ALL WORK SHOWN SHALL BE DONE IN STRICT ACCORDANCE WITH THE MASSACHUSETTS STATE BUILDING CODES, THE MASSACHUSETTS STATE ELECTRICAL CODE, APPLICABLE PROJECT SPECIFICATIONS AND APPLICABLE SECTIONS OF THE NFPA. IN ADDITION ALL REQUIREMENTS SHALL BE COORDINATED WITH THE AHJ AND THE PVTA.
3	CIRCUIT NUMBERS ARE DIAGRAMMATIC. EXACT NUMBERS SHALL BE DETERMINED IN THE FIELD AND REFLECTED ON AS-BUILT DOCUMENTATION BY THE ELECTRICAL CONTRACTOR. THE ASSOCIATED CIRCUIT NUMBERS THAT ARE APPLIED TO EACH DEVICE AND PIECE OF EQUIPMENT INFERS INTERCONNECTING BRANCH CIRCUITRY. INTERCONNECTING BRANCH WIRING SHALL BE SIZED EQUAL TO THE HOMERUN UNLESS NOTED OTHERWISE.
4	VOLTAGE DROP HAS BEEN CONSIDERED IN THE DESIGN OF ALL BRANCH CIRCUITRY AND FEEDER SIZES BASED UPON THE ILLUSTRATED EQUIPMENT LAYOUTS AND SHORTEST CONDUCTOR/RACEWAY ROUTING. ANY DEVIATIONS TAKEN THAT WILL INCREASE CONDUCTOR/RACEWAY ROUTING LENGTHS NEED TO BE DISCUSSED WITH THE DESIGN TEAM. VOLTAGE DROP FOR BRANCH CIRCUIT IS DESIGNED TO BE LESS THAN 3%. FEEDERS SHALL FOLLOW SIMILAR GUIDELINES AND BE LIMITED TO 2% DROP.
5	COORDINATE PENETRATIONS THROUGH WALLS, CEILING AND SLABS WITH FIRE RATINGS. PROVIDE PENETRATION FIRE STOPPING TO MAINTAIN REQUIRED RATING.
6	COORDINATE ALL CONDUIT ROUTING IN PUBLIC SPACE WITH ARCHITECTURAL AND STRUCTURAL.

GROUNDING NOTES:	
1	GROUNDING GRID CONDUCTORS SHALL BE #4/0 AWG BARE STRANDED COPPER WIRE. ALL GROUND RODS SHALL BE COPPER-CLAD STEEL, 3/4" DIAMETER MINIMUM, 10'-0" IN LENGTH, TOPS DRIVEN TO 2'-6" BELOW FINISHED GRADE. A MINIMUM NUMBER OF GROUND RODS AS SHOWN ON THIS DRAWING SHALL BE USED TO INSTALL ADDITIONAL GROUND RODS AS NECESSARY TO MEET THE CONTRACT PERFORMANCE REQUIREMENTS.
2	GROUNDING CONDUCTORS SHALL BE PROTECTED BY RIGID NON-METALLIC CONDUIT WHEN EXPOSED ABOVE GRADE.
3	ALL CONNECTIONS SHALL BE EXOTHERMIC WELD TYPE.
4	WHERE METAL SECURITY FENCES ARE INSTALLED, CONNECT THE NEAREST FENCE POSTS AND ACCESS GATE POSTS TO GROUND GRID. GROUNDING CONNECTIONS REQUIRED EVERY OTHER FENCE POST.
5	GROUNDING GRID SHALL BE CONSTRUCTED IN NATIVE SOIL ONLY. A MINIMUM OF 6 INCHES OF NATIVE SOIL SHALL COVER THE ENTIRE GRID AREA.
6	ALL GROUNDING AND BONDING SHALL BE INSTALLED TO COMPLY WITH UL STANDARD #467, NFPA 70, IEEE 80 AND PERFORMANCE AND TECHNICAL REQUIREMENTS OF THIS CONTRACT.
7	COORDINATE LOCATION OF GROUNDING GRID WITH STATION AND GUIDEWAY STRUCTURAL COMPONENTS, UNDERGROUND UTILITY LINES, TREE ROOTS, ETC.
8	GROUNDING GRID SHALL EXTEND TO AT LEAST 3 FEET OUTSIDE BOUNDARY WALL/FENCES OF STATION TO MITIGATE TOUCH POTENTIAL HAZARD.
9	THE GROUNDING ELECTRODE SYSTEM SHALL MAINTAIN A RESISTANCE TO GROUND OF 2 OHMS OR LESS.
10	BUILDING STEEL STRUCTURES SHALL BE GROUNDED AT EACH COLUMN BASE AND JUMPERS PROVIDED TO MAINTAIN GROUND CONTINUITY THROUGHOUT.
11	GROUNDING LUGS OF EXTERIOR LIGHTING POLES, BASES AND LUMINARIES SHALL BE CONNECTED TO THE GROUNDING SYSTEM

LIGHTING NOTES:	
1	PROVIDE COMMON FACE PLATE AND REQUIRED METAL INTERIOR BOX BARRIERS FOR ALL MULTIPLE GANG SWITCH LOCATIONS.
2	PROVIDE CONSTANTLY ENERGIZED (UNSWITCHED) BRANCH CIRCUIT TO ALL EXIT SIGNS AND EGRESS LIGHTS FROM THE DESIGNATED SOURCE.
3	CONTRACTOR SHALL VERIFY ALL DOORS SWINGS BEFORE INSTALLING SWITCH BOXES.
4	COORDINATE LIGHTING MOUNTING HEIGHT IN EQUIPMENT ROOMS WITH EQUIPMENT LAYOUTS.

ABBREVIATIONS			
A/AMP	AMPERE	LTG	LIGHTING
AC	ALTERNATING CURRENT	MCB	MAIN CIRCUIT BREAKER
ADA	AMERICAN WITH DISABILITIES ACT	MEC	MASSACHUSETTS ELECTRIC CODE
AF	AMPERE FRAME	MH	MANHOLE
AFF	ABOVE FINISHED FLOOR	MLO	MAIN LUGS ONLY
AFG	ABOVE FINISHED GRADE	MTD	MOUNTED
AIC	AMPERE INTERRUPTING CAPACITY	MTS	MANUAL TRANSFER SWITCH
AL	ALUMINUM	NEC	NATIONAL ELECTRIC CODE
AT	AMPERE TRIP	NTS	NOT TO SCALE
ATS	AUTOMATIC TRANSFER SWITCH	OCS	OVERHEAD CONTACT SYSTEM
C	CONDUIT	PAT	PASSENGER ASSISTANCE TELEPHONE
CC	COMMUNICATIONS CABINET	PVC	POLYVINYL CHLORIDE
CCTV	CLOSED CIRCUIT TELEVISION	RGC	RIGID GALVANIZED CONDUIT
CB	CIRCUIT BREAKER	SPTO	SINGLE PERSON TRAIN OPERATOR
CKT	CIRCUIT	SWBD	SWITCHBOARD
DWG	DRAWING	TPSS	TRACTION POWER SUBSTATION
EC	ELECTRICAL CONTRACTOR	TYP	TYPICAL
EMT	ELECTRICAL METALLIC TUBING	UON	UNLESS OTHERWISE NOTED
ETR	EXISTING EQUIPMENT SHALL REMAIN IN PLACE	UPS	UNINTERRUPTIBLE POWER SUPPLY
GFI	GROUND FAULT INTERRUPTING	V	VOLT
GND	GROUND	VA	VOLT AMPERE
HH	HANDHOLE	VFD	VARIABLE FREQUENCY DRIVE
HP	HORSEPOWER	VMS	VOICE MESSAGING SYSTEM
HVAC	HEATING, VENTILATION AND AIR CONDITIONING	W	WATT
HZ	HERTZ	WP	WEATHERPROOF
KVA	KILOVOLT - AMPERE	WY	WAYSIDE PHONE
KW	KILOWATT		

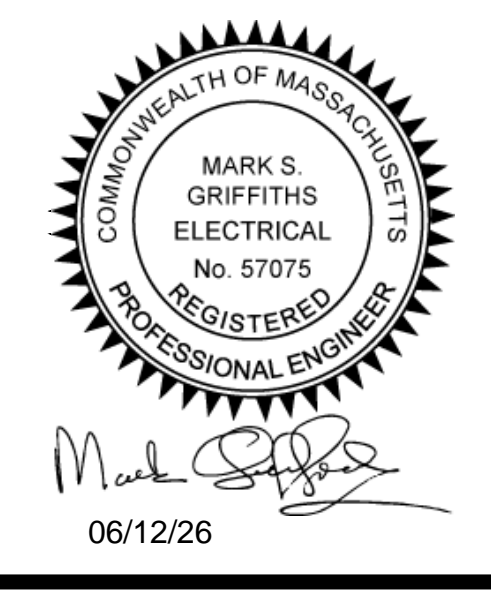
PROJECT ALTERNATIVES

ALTERNATIVE 1 (ALT 1): ADDITIONAL LEVEL 2 VEHICLE CHARGER



CONSULTANTS

SEALS



PROJECT IDENTIFICATION

PVTA PARATRANSIT FACILITY ELECTRIFICATION
2840 MAIN STREET
SPRINGFIELD, MA

MARK	DATE	DESCRIPTION	BY
	06/12/26		

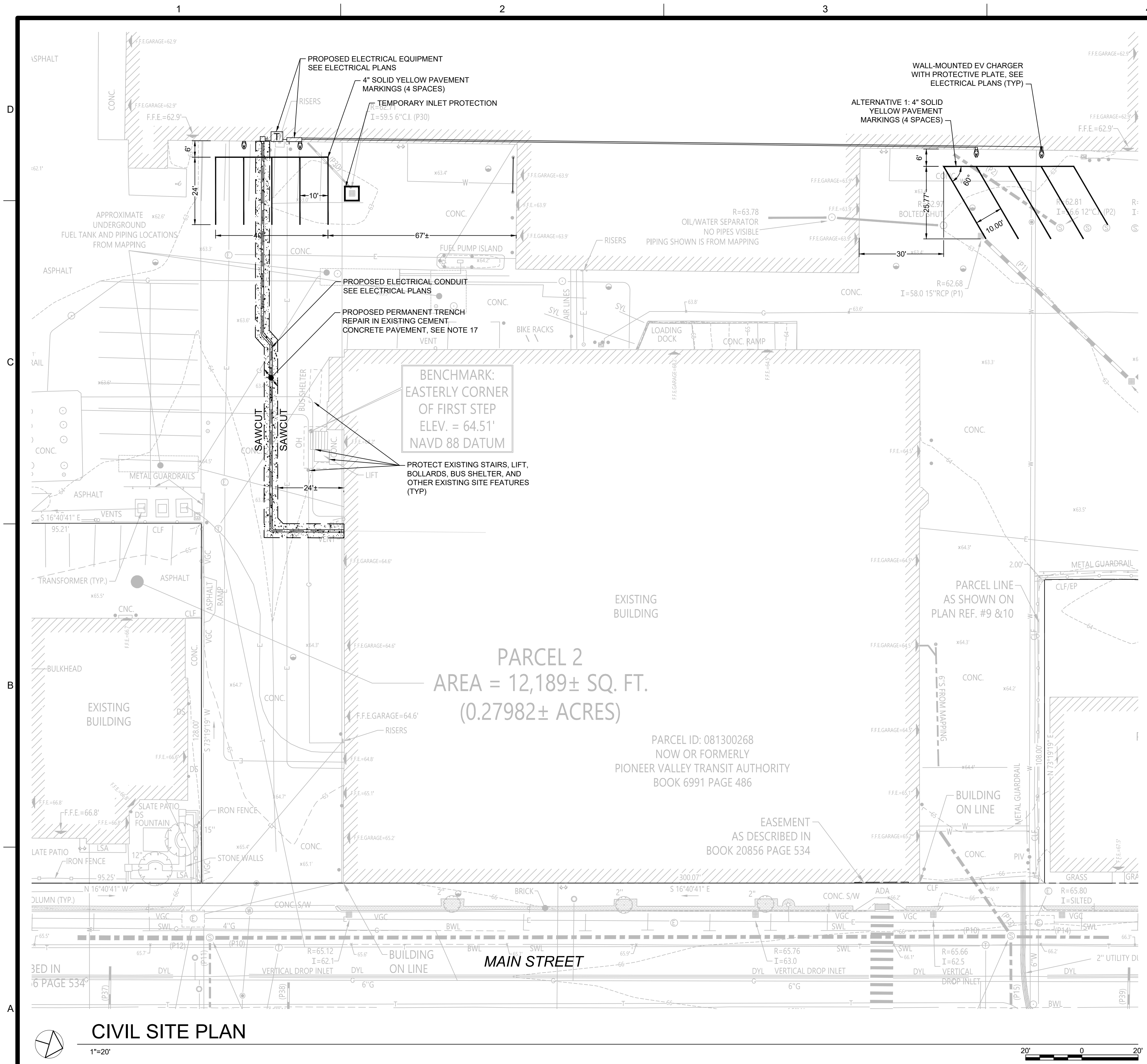
ISSUE BLOCK

PROJECT NO.:	3023168_0003
DESIGNED BY:	AR
DRAWN BY:	BH
CHECKED BY:	MK
APPROVED BY:	SP
COPYRIGHT:	STV Incorporated

SHEET TITLE

**ELECTRICAL
LEGEND, NOTES &
ABBREVIATIONS**

E-001

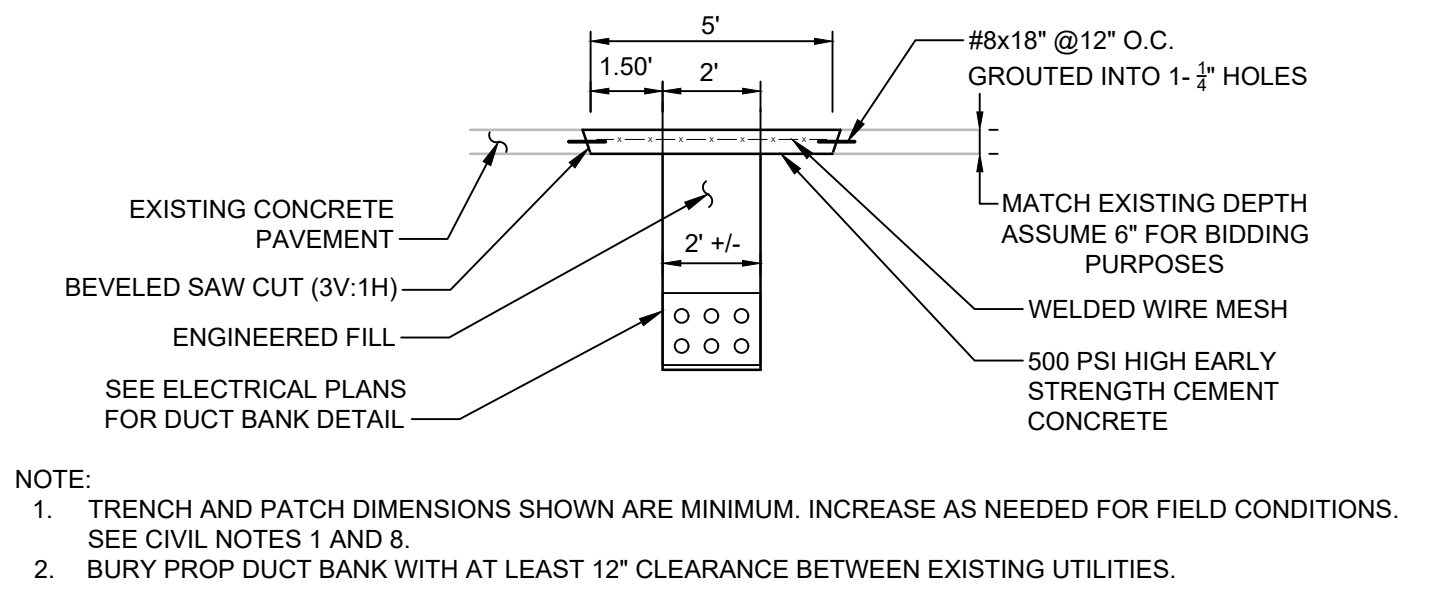


CIVIL NOTES

- CONTRACTOR SHALL PRE-MARK PROPOSED SAWCUTS AND PAVEMENT MARKINGS FOR REVIEW AND APPROVAL BY THE OWNER BEFORE SAWCUTTING CONCRETE OR INSTALLING PAVEMENT MARKINGS.
- CONTRACTOR SHALL FURNISH AND MAINTAIN BARRIERS, ROAD PLATES, TEMPORARY HMA, CHANNELIZING DEVICES, AND OTHER MEASURES AS NEEDED TO PROTECT THE WORK, PVTA PERSONNEL, AND PUBLIC.
- CONTRACTOR SHALL SEQUENCE THE WORK TO MAINTAIN ACCESS FOR EMERGENCY VEHICLES AND PVTA OPERATIONS AROUND THE WORK ZONE.
- TRENCHES SHALL BE COVERED WITH STEEL PLATES CAPABLE OF SUPPORTING HS-20 LOADING OR BACKFILLED WITH TEMPORARY BACKFILL UNTIL FINAL TRENCH REPAIR IS COMPLETED. EXCEPT FOR TRENCHES BEING ACTIVELY WORKED, IN NO CASE MAY A TRENCH REMAIN OPEN UNLESS PROTECTED BY CONCRETE BARRIERS AND AUTHORIZED BY THE ENGINEER.
- TRENCHES SHALL BE BACKFILLED AND COMPACTED WITH EXISTING SATISFACTORY SOILS OR NEW SUBBASE MATERIAL. LIFTS SHALL BE 12" (MAX) BEFORE COMPACTION AND COMPACTED TO 95% OF MAXIMUM DRY DENSITY.
- SAWCUTS SHALL BE NEAT. IF THE CONCRETE SPALLS OR BREAKS, THE CONTRACTOR SHALL MAKE A NEW CUT OUTSIDE THE SAWED AREA IN SOUND CONCRETE AT THE CONTRACTOR'S EXPENSE.
- ANY UNDERMINED, DISTURBED, OR UNSTABLE SUBGRADE OR SUBBASE MATERIAL SHALL BE REMOVED. IF EXISTING CONCRETE PAVEMENT IS UNDERMINED, CONTRACTOR SHALL REPAIR PAVEMENT 18" FROM EDGE OF STABLE SUBGRADE AT THE CONTRACTOR'S EXPENSE.
- EDGES OF CONCRETE PATCH SHALL NOT BE CLOSER THAN FIVE FEET FROM AN EXISTING JOINT. IF THE PATCH WILL FALL WITHIN THIS DISTANCE, ALL CONCRETE UP TO THE EXISTING JOINT SHALL BE REMOVED AND REPLACED AT THE CONTRACTOR'S EXPENSE.
- IMMEDIATELY BEFORE PLACING CONCRETE, CONTRACTOR SHALL BRUSH EXPOSED FACES OF EXISTING CONCRETE WITH CEMENT-WATER-SAND GROUT OR EPOXY BONDING COMPOUND.
- WELDED WIRE MESH SHALL BE PLACED AT LEAST 2-1/2" BELOW THE SURFACE. NO PHYSICAL TIE TO EXISTING WIRE MESH IS REQUIRED.
- MATCH FINISH TEXTURE OF ADJACENT EXISTING CONCRETE PAVEMENT.
- PATCH SHALL BE PROTECTED FROM TRAFFIC FOR AT LEAST 24 HOURS OR UNTIL A STRENGTH OF 2500 PSI IS ACHIEVED.
- THE LOCATION OF ALL UNDERGROUND UTILITIES SHOWN ARE APPROXIMATE AND ARE BASED ON AVAILABLE RECORD PLANS. CONTRACTOR SHALL VERIFY THE LOCATIONS OF ALL UTILITIES AND OTHER EXISTING ELEMENTS THAT MAY AFFECT THE WORK.
- CONTRACTOR SHALL CALL DIGSAFE AT 888-344-7233 AT LEAST 72 BUSINESS HOURS BEFORE EXCAVATING.
- ALL PAVEMENT MARKINGS SHALL BE WATER-BORNE TRAFFIC PAINT.
- CONTRACTOR SHALL PREVENT SEDIMENT FROM THE WORK SITE FROM BEING TRANSPORTED OFF SITE OR ENTERING THE STORMWATER SYSTEM. INSTALL INLET PROTECTION AT ALL DRAINAGE INLETS WITHIN AND DOWNGRADE OF THE WORK AREA. INSTALL SEDIMENT CONTROL BARRIERS AND SWEEP WORK AREAS AS NEEDED TO PREVENT THE TRANSPORTATION OF SEDIMENT. ADDITIONAL PROTECTION MEASURES NOT SHOWN ON THE PLAN MAY BE REQUIRED.
- LIMITS OF TRENCHING SHOWN ARE APPROXIMATE. CONTRACTOR SHALL DETERMINE EXACT LIMITS OF TRENCHING IN FIELD AND ENSURE LIMITS COVER EXISTING PATCHING OVER SPALLED CONCRETE.

PROJECT ALTERNATIVES

ALTERNATIVE 1 (ALT 1): PAVEMENT MARKINGS AT ADDITIONAL LEVEL 2 VEHICLE CHARGERS.



PERMANENT TRENCH REPAIR IN EXISTING CEMENT CONCRETE PAVEMENT

NOT TO SCALE



CONSULTANTS

SEALS



PROJECT IDENTIFICATION

PVTA PARATRANSIT FACILITY ELECTRIFICATION
2840 MAIN STREET
SPRINGFIELD, MA

9			
8			
7			
6			
5			
4			
3			
2			
1			
MARK	DATE	DESCRIPTION	BY

ISSUE BLOCK

PROJECT NO.: 3023168_0003
DESIGNED BY: DK
DRAWN BY: DK
CHECKED BY: AB
APPROVED BY: SP
COPYRIGHT: STV Incorporated

SHEET TITLE

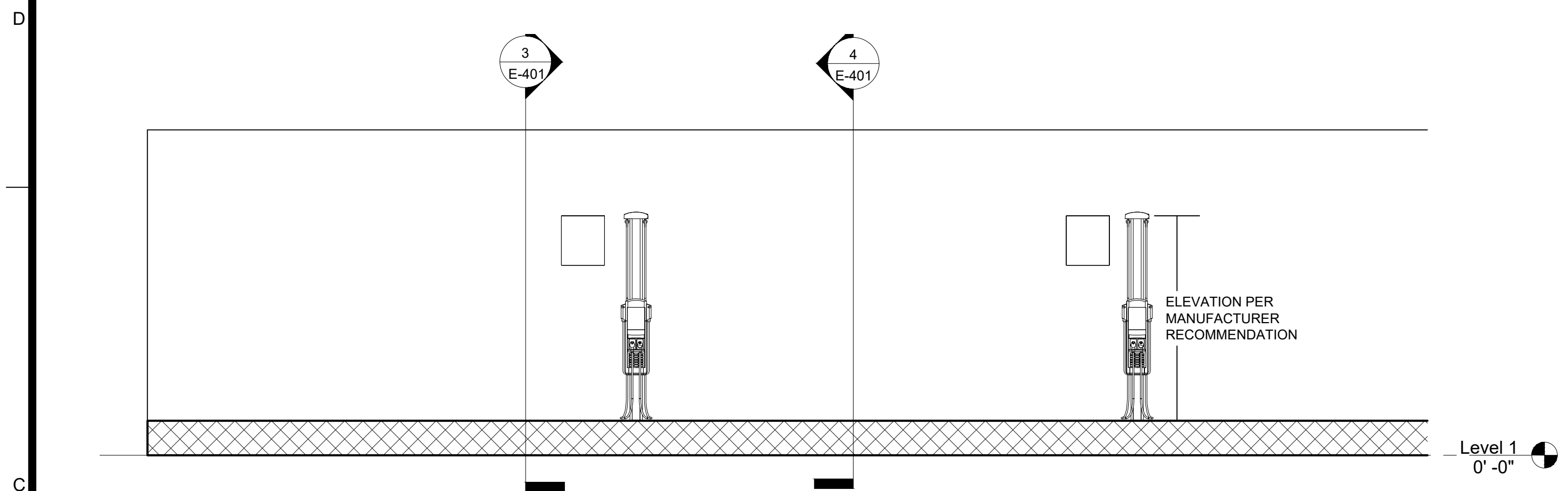
CIVIL SITE PLAN & DETAILS

C-101

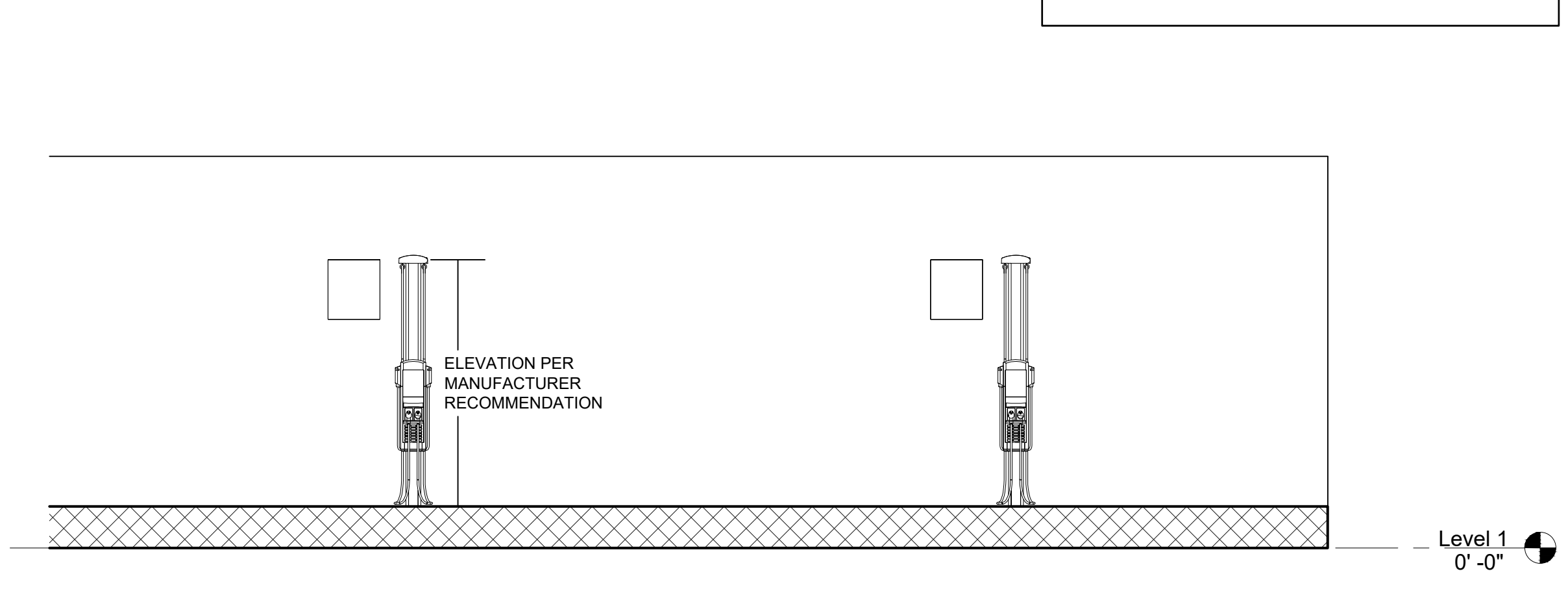
GENERAL NOTES
 1. FOR SYMBOL LIST, ABBREVIATION AND GENERAL NOTES SEE SHEET E-001.

stv
 STV Incorporated
 One Financial Center
 Boston, MA 02111
 T: 617.482.7298
 www.stvinc.com

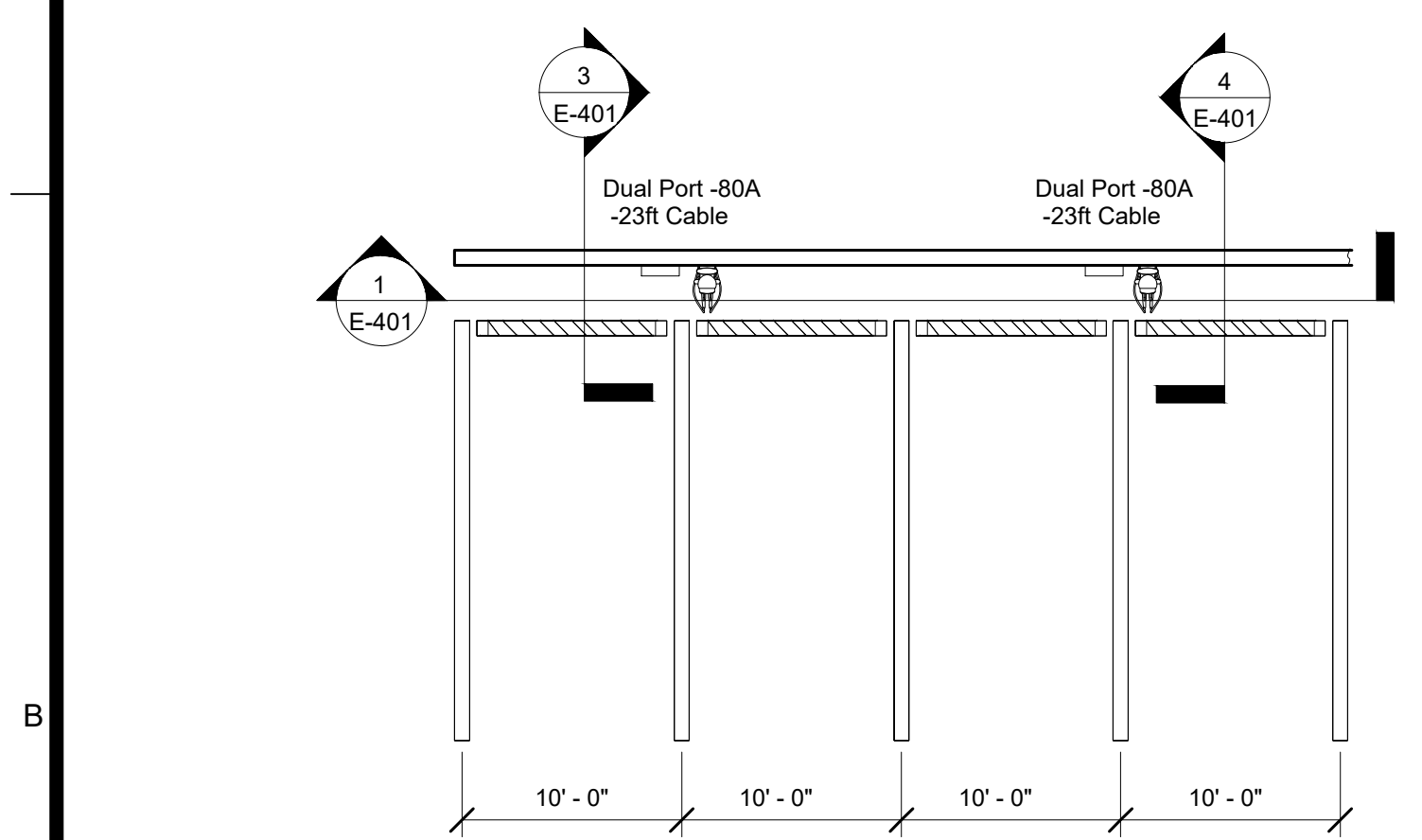
CONSULTANTS



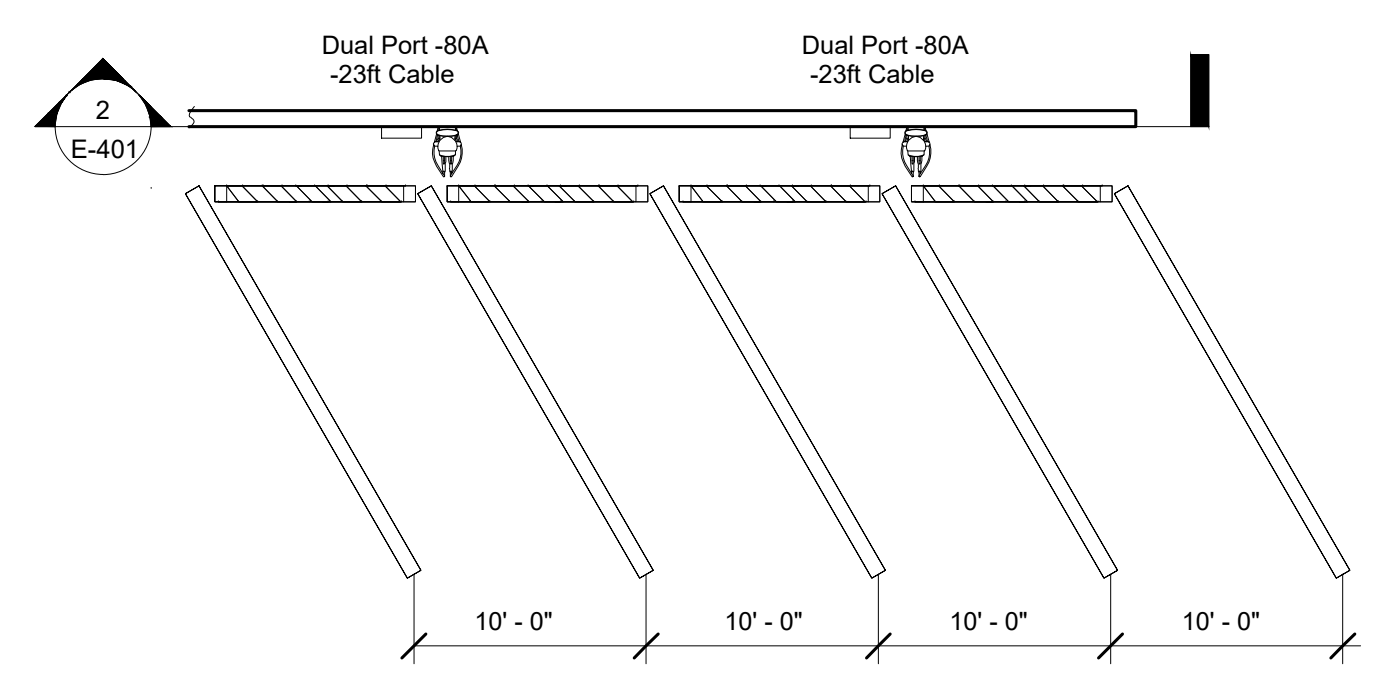
1 ELECTRICAL CHARGING STATION ELEVATION - VIEW #1
 E-401 NOT TO SCALE



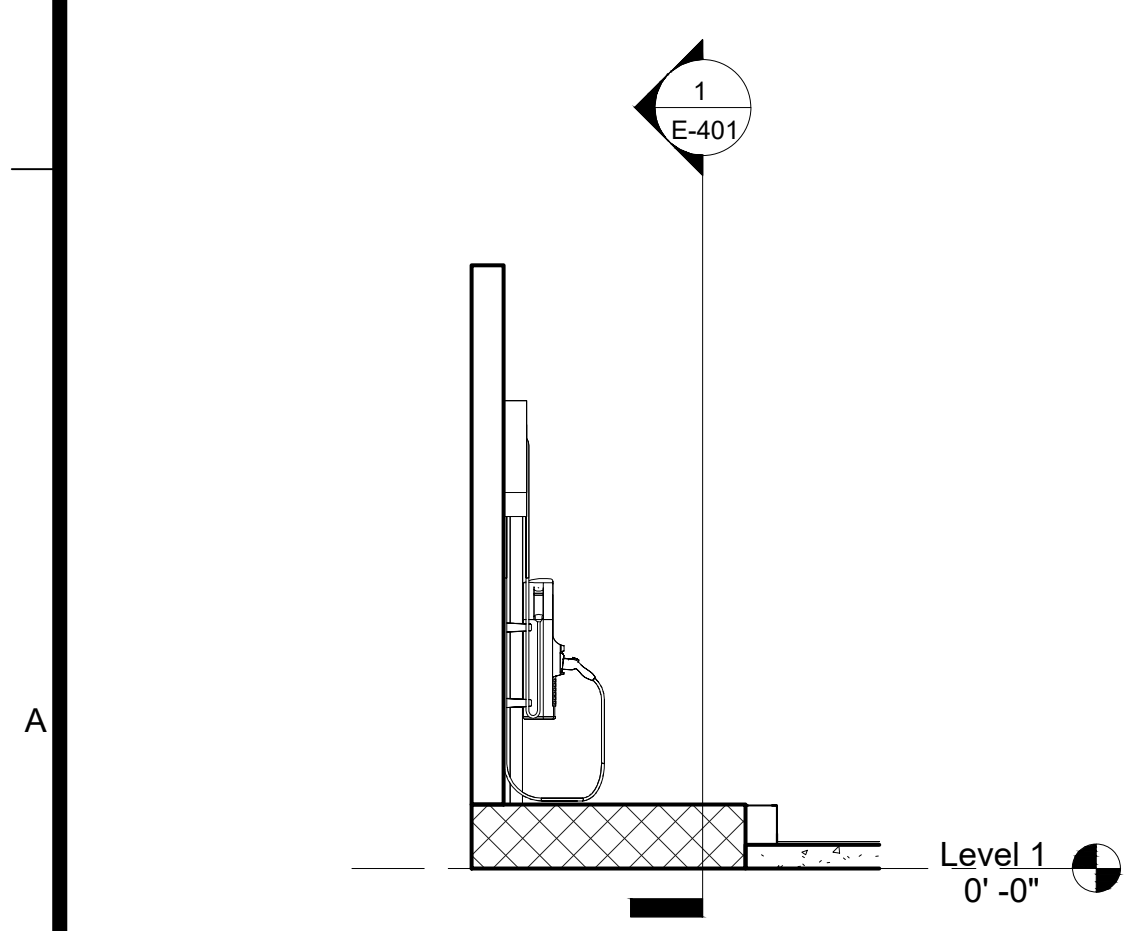
2 ALT 1: ELECTRICAL CHARGING STATION ELEVATION - VIEW #1
 E-401 NOT TO SCALE



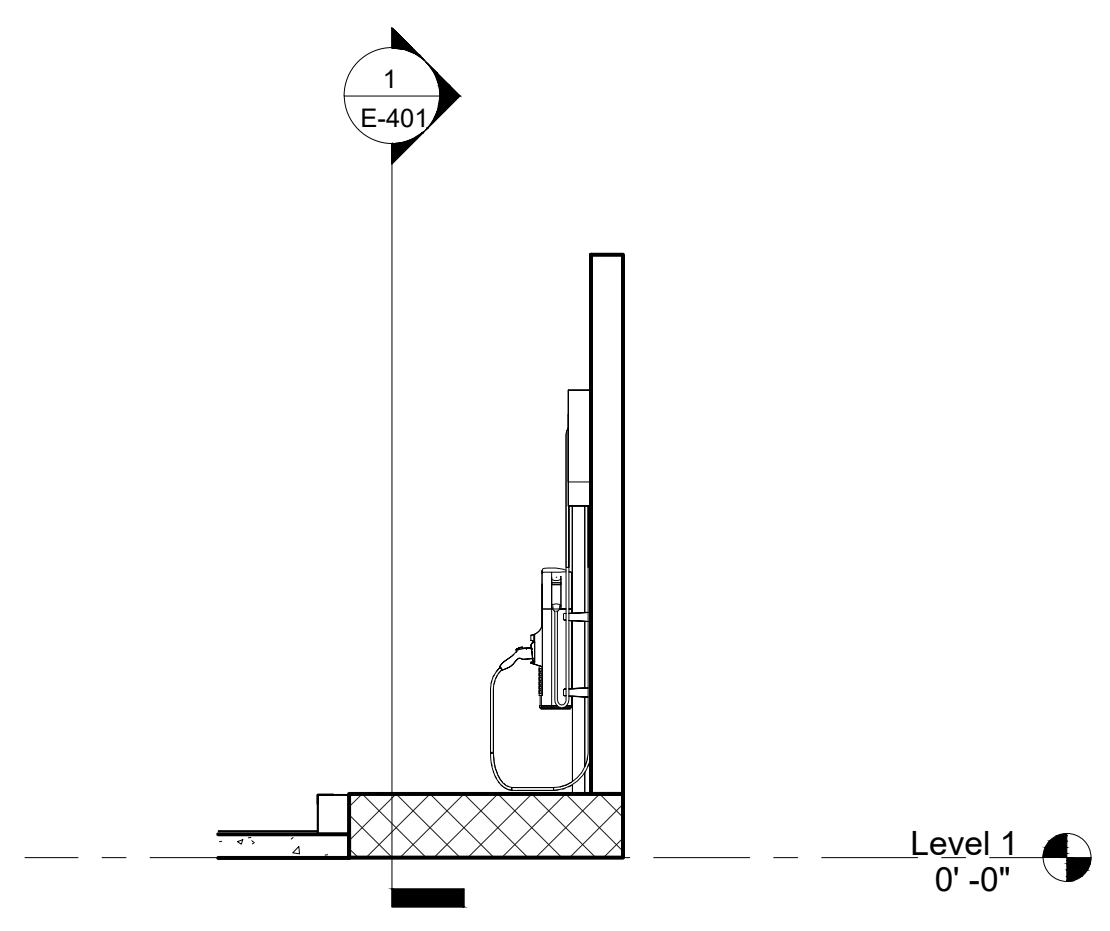
3 ELECTRICAL CHARGING STATION FLOOR PLAN- VIEW #1
 E-401 NOT TO SCALE



4 ALT 1: ELECTRICAL CHARGING STATION FLOOR PLAN- VIEW #2
 E-401 NOT TO SCALE



5 ELECTRICAL CHARGING STATION PROFILE ELEVATION VIEW
 E-401 NOT TO SCALE



SEALS



PROJECT IDENTIFICATION

PVTA PARATRANSIT FACILITY
 ELECTRIFICATION
 2840 MAIN STREET
 SPRINGFIELD, MA

MARK	DATE	DESCRIPTION	BY

ISSUE BLOCK

PROJECT NO.:	3023168_0003
DESIGNED BY:	AR
DRAWN BY:	BH
CHECKED BY:	MK
APPROVED BY:	SP
COPYRIGHT:	STV Incorporated

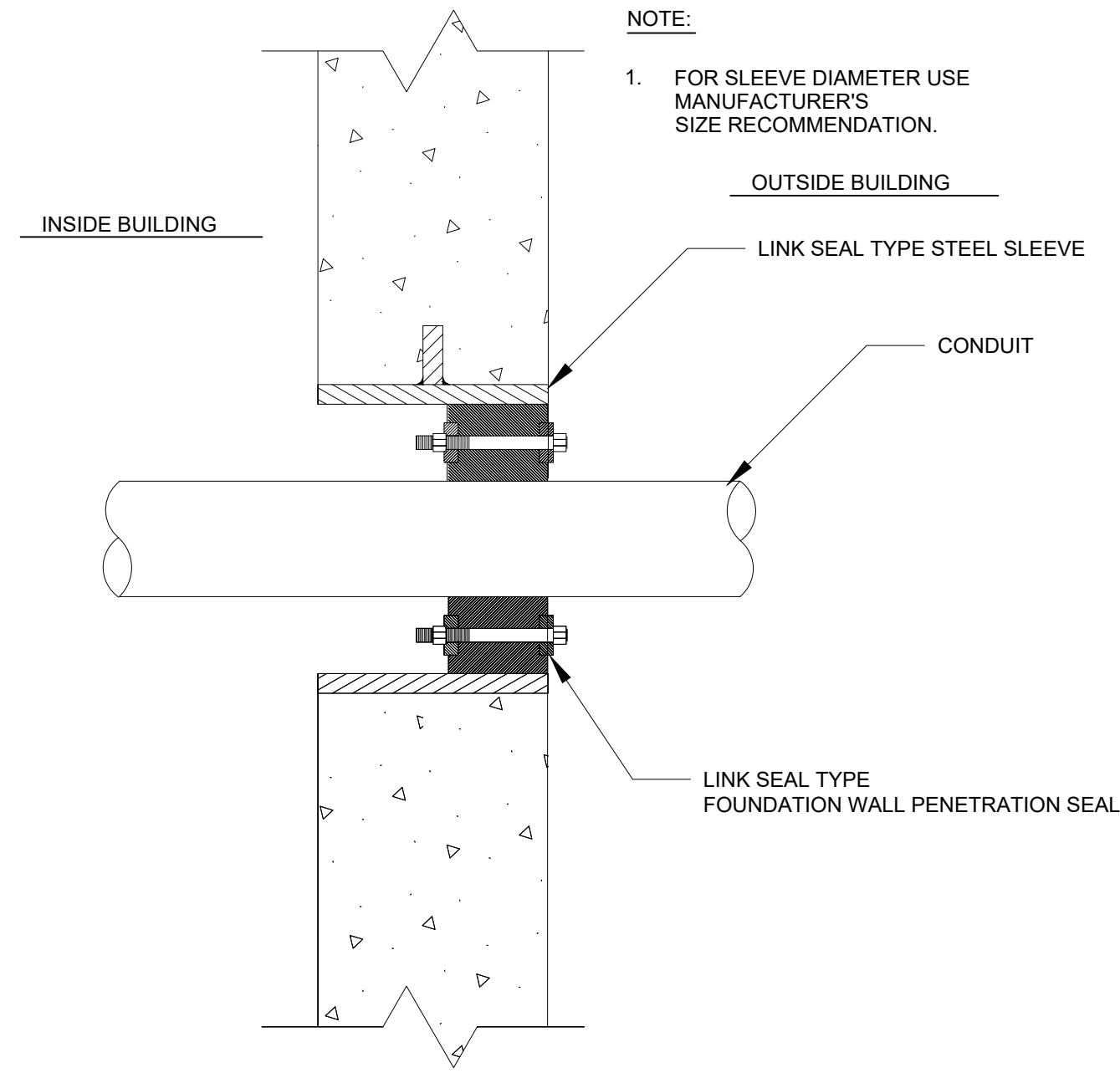
SHEET TITLE
**ELECTRICAL
 VEHICLE CHARGER
 ENLARGED VIEWS**

E-401

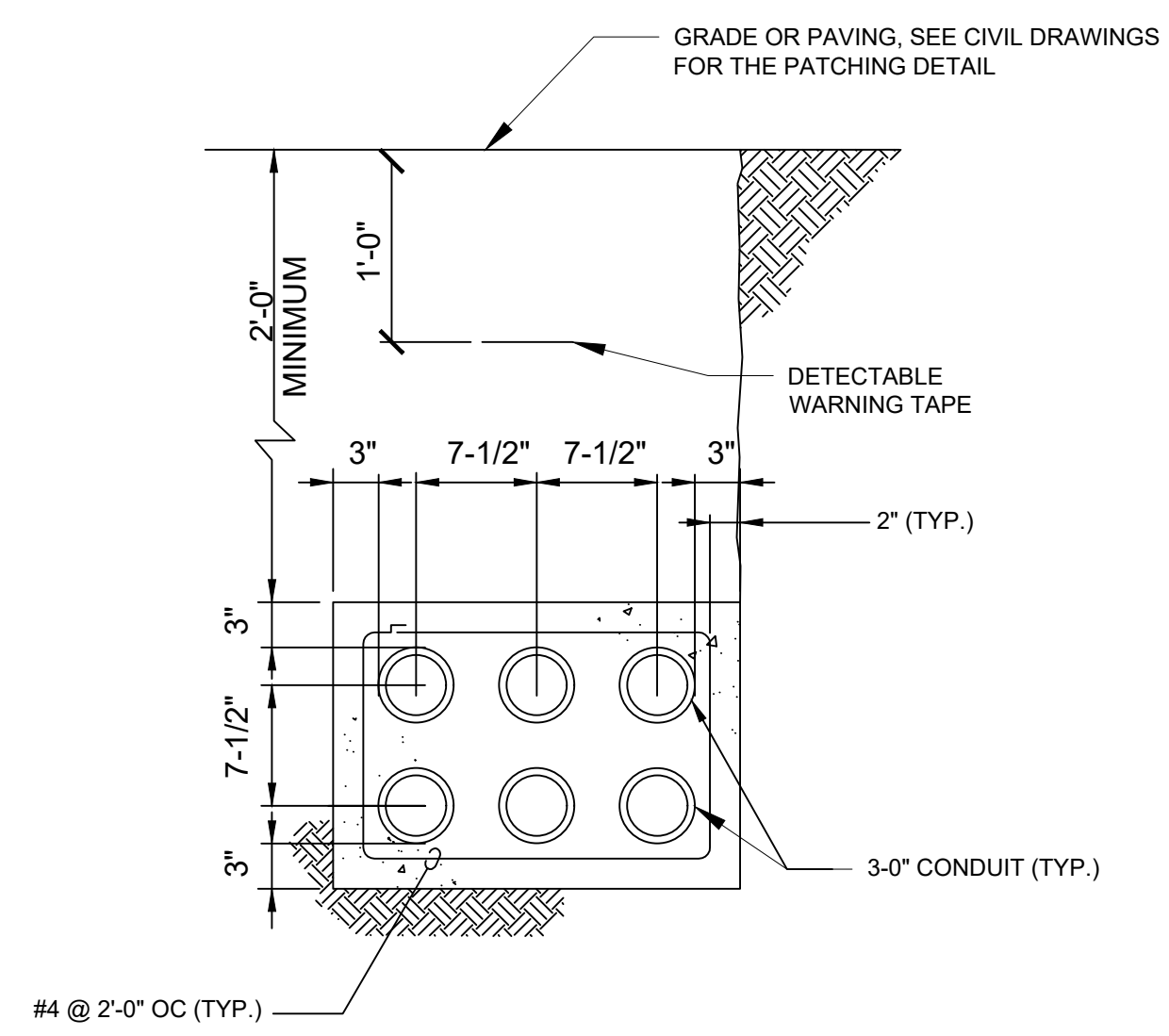
GENERAL NOTES
 1. FOR SYMBOL LIST, ABBREVIATION AND GENERAL NOTES SEE SHEET E-001.

stv
 STV Incorporated
 One Financial Center
 Boston, MA 02111
 T: 617.482.7298
 www.stvinc.com

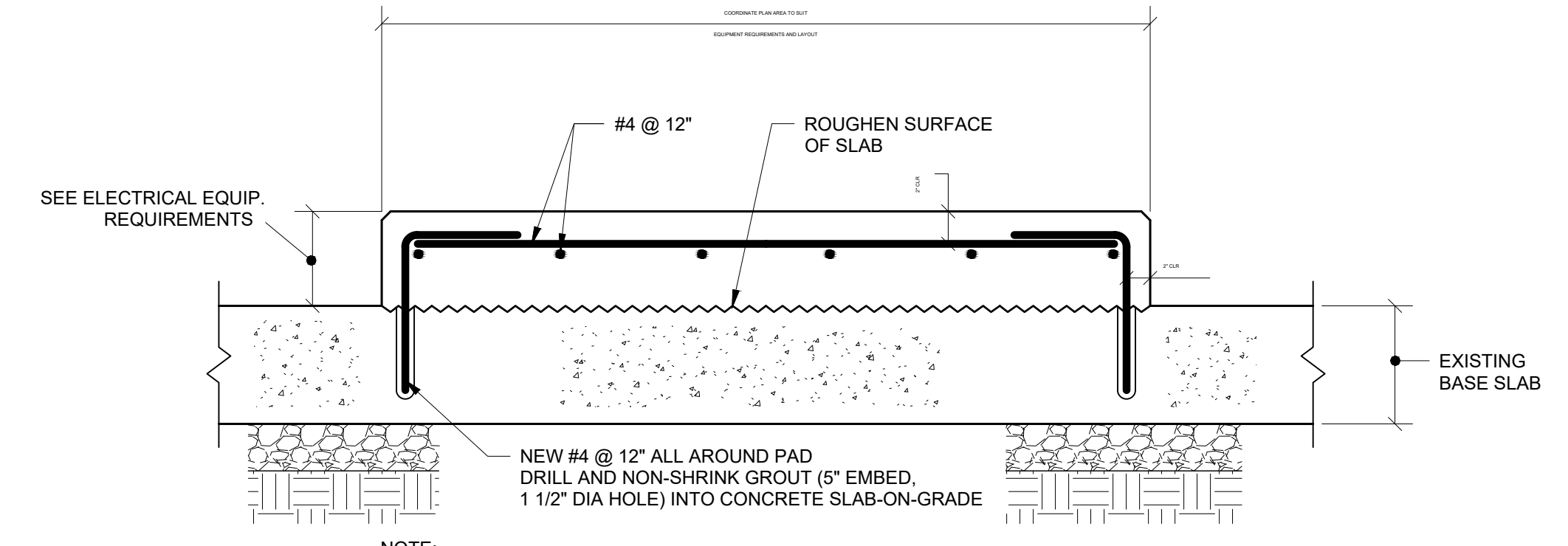
CONSULTANTS



1 CONDUIT WALL PENETRATION AND SEAL DETAIL
 NOT TO SCALE



2 TYPICAL DUCTBANK DETAIL
 NOT TO SCALE



3 ELECTRICAL EQUIPMENT PAD DETAIL
 NOT TO SCALE

SEALS



Mark S. Griffiths
 06/12/26

PROJECT IDENTIFICATION

PVTA PARATRANSIT FACILITY
 ELECTRIFICATION
 2840 MAIN STREET
 SPRINGFIELD, MA

MARK	DATE	DESCRIPTION	BY

ISSUE BLOCK	
PROJECT NO.:	3023168_0003
DESIGNED BY:	AR
DRAWN BY:	BH
CHECKED BY:	MK
APPROVED BY:	SP
COPYRIGHT:	STV Incorporated

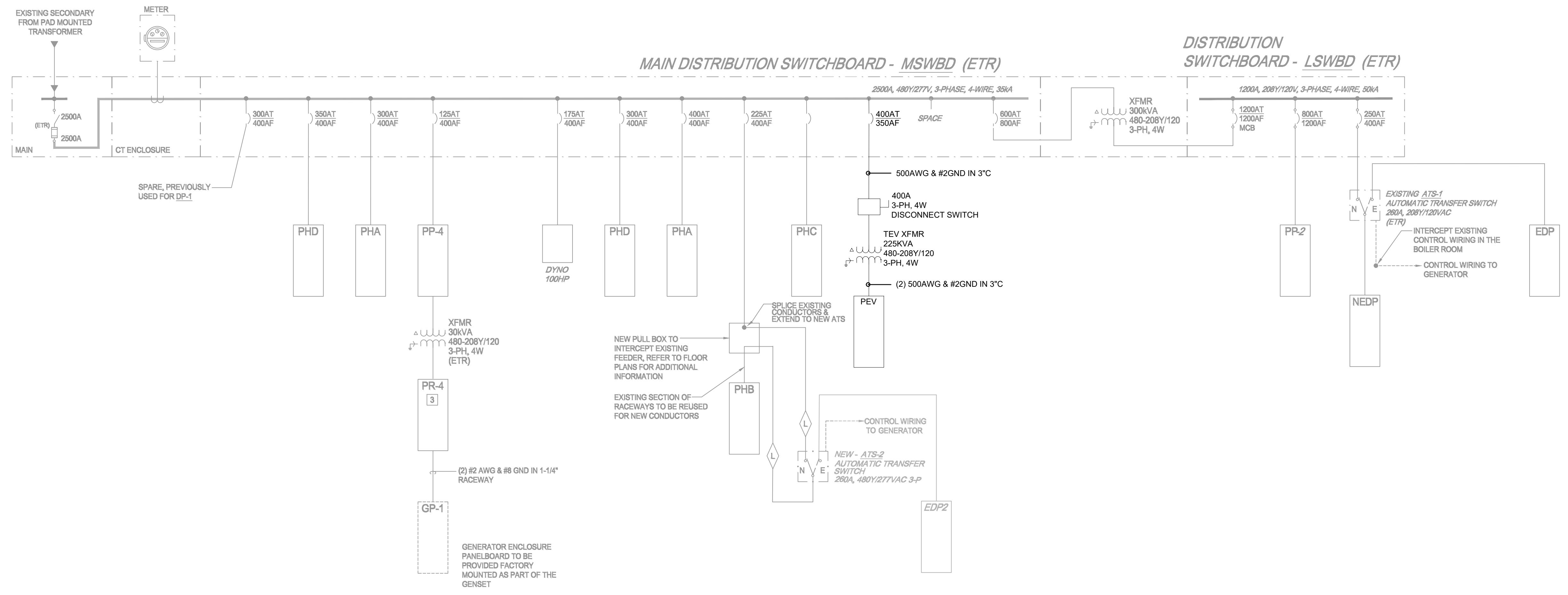
SHEET TITLE
**ELECTRICAL
 DETAIL PLAN**

E-501

GENERAL NOTES
 1. FOR SYMBOL LIST, ABBREVIATION AND GENERAL NOTES SEE SHEET E-001.

stv
 STV Incorporated
 One Financial Center
 Boston, MA 02111
 T: 617.482.7298
 www.stvinc.com

CONSULTANTS



1 NEW ELECTRICAL ONE-LINE DIAGRAM
 NOT TO SCALE

SEALS

06/12/26

PROJECT IDENTIFICATION
 PVTA PARATRANSIT FACILITY ELECTRIFICATION
 2840 MAIN STREET
 SPRINGFIELD, MA

MARK	DATE	DESCRIPTION	BY
	06/12/26		

ISSUE BLOCK

PROJECT NO.:	3023168_0003
DESIGNED BY:	AR
DRAWN BY:	BH
CHECKED BY:	MK
APPROVED BY:	SP
COPYRIGHT:	STV Incorporated

SHEET TITLE
NEW ELECTRICAL ONE-LINE DIAGRAM

E-601

MAIN SWITCHBOARD (XM)									
SUPPLY FROM:									
VOLTAGE: 13.8KV		3P, 4W		MAINS: 2000A					
MOUNTING: FREE STANDING				MLO/MAIN BREAKER: 2500A		MCB			
GROUND BUS: SEE SPECIFICATIONS				AIC RATING: 200K					
CKT. NO.	DESIGNATION	LOAD (VA)	BREAKERS			REMARKS			
			FRAME	TRIP	POLE				
1	Main Breaker	0	2500A	2500A					
2	Metering	0							
3	PP-4	0	400A	125A	3				
4	DYNO	0	400A	175A	3				
5	PHD	0	400A	300A	3				
6	DP-3	0	400A	300A	3				
7	DP-1	0	400A	300A	3				
8	PHL (SPARE)	0			3				
9	DP-2	0	400A	350A	3				
10	PHC	0			3				
11	PHA	0	400A	400A	3				
12	PHB	0	400A	225A	3				
13	XFMR	0	600A		3				
14	300KVA XFMR	0			3				
15	Metering	0			3				
16	Main Breaker	0	1200A	1200A	3				
17	ATS	0	150A	150A	3				
18	XRP-1	0	50A	50A	3				
19	XRP-2	0	50A	50A	3				
19	PEV PNL VIA 225KVA XFMR	332K	400A	350A	3				
20	SPARE	0			3				
TOTAL CONNECTED KVA =		332K	DIVIDE BY:	238.8	AMPS:	0	AMPS		
TOTAL DEMAND KVA =		332K	DIVIDE BY:	238.8	AMPS:	0	AMPS		

Branch Panel: PEV													
Location:		Vehicle Storage		Volts:		208/120V		A.I.C. Rating:		42kAIC			
Supply From:		Main Switchboard Via XFMR		Phases:		3		Mains Type:		MCB			
Mounting:		Surface		Wires:		4		Mains Rating:		800A			
Enclosure:		NEMA 12						MCB Rating:		800A			
CKT.	Circuit Description	Trip	Poles	A		B		C		Poles	Trip	Circuit Description	CKT.
1	EVCH-1A	100A	2	8320	8320					2	100A	ALT 1: EVCH-3A	2
3						8320	8320						
5	EVCH-1B	100A	2					8320	8320	2	100A	ALT 1: EVCH-3B	6
7				8320	8320								8
9	EVCH-2A	100A	2					8320	8320	2	100A	ALT 1: EVCH-4A	10
11								8320	8320				12
13	EVCH-2B	100A	2	8320	8320					2	100A	ALT 1: EVCH-4B	14
15						8320	8320						
17													18
19													20
21													22
23													24
25													26
27													28
29													30
Total Load:				49920	VA	49920	VA	33280	VA				
Total Amps:				240	A	240	A	160	A				
Load Classification		Connected Load		Demand Factor		Estimated Demand		Panel Totals					
HVAC		0	VA		%			0	VA				
Receptacle		0	VA		%			0	VA	Total Connected Load	133120	VA	
Power		0	VA		%			0	VA	Total Estimated Demand	133120	VA	
Lighting		0	VA		%			0	VA	Total Connected Current	640	A	
Motor		0	VA		%			0	VA	Total Estimated Demand Current	640	A	
Other			VA		%			0	VA				

GENERAL NOTES
 1. FOR SYMBOL LIST, ABBREVIATION AND GENERAL NOTES SEE SHEET E-001.



CONSULTANTS

SEALS



Mark S. Griffiths
 06/12/26

PROJECT IDENTIFICATION

PVTA PARATRANSIT FACILITY
 ELECTRIFICATION
 2840 MAIN STREET
 SPRINGFIELD, MA

06/12/26			
MARK	DATE	DESCRIPTION	BY

ISSUE BLOCK

PROJECT NO.: 3023168_0003
 DESIGNED BY: AR
 DRAWN BY: BH
 CHECKED BY: MK
 APPROVED BY: SP
 COPYRIGHT: STV Incorporated

SHEET TITLE

**NEW
 ELECTRICAL
 SCHEDULE**

E-901