

ATTACHMENT B

Pump Curve



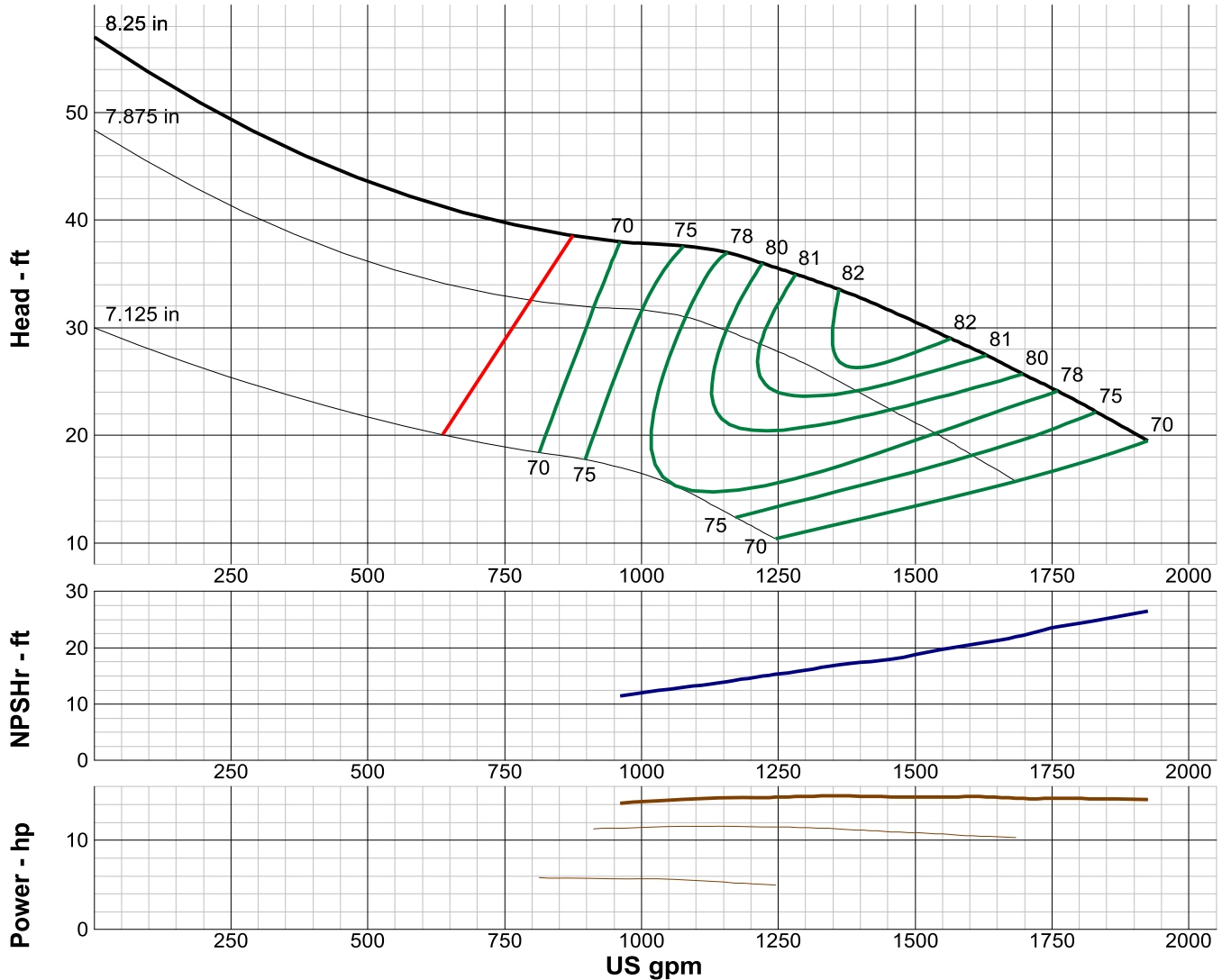
TURBINE PUMP CURVE

SINGLE STAGE PERFORMANCE

JANUARY 2010

480 SERIES

10ZS 1760 RPM



IMPELLER DATA		
IMPELLER NUMBER	3863	Minimum submergence above eye of bottom impeller: 30 IN.
TYPE	SEMI-OPEN	
THRUST FACTOR	K=13.50	
EYE AREA	26.7 SQ. IN.	
WEIGHT	5.75 LB.	

EFFICIENCY CORRECTION					
NUMBER OF BOWLS:	1	2	3	4	5
CHANGE AS FOLLOWS:	-5	-4	-2	-1	0
CHANGE IN EFFICIENCY MAY AFFECT BOTH HEAD AND HORSEPOWER.					

PUMP MATERIAL EFFICIENCY CORRECTION				
	DUCTILE	BRONZE	NI-R	STAINLESS
IMPELLER MATERIAL:	-1	0	-1	-2
BOWL MATERIAL:	-2	-2	-1	-3

FLANGED BOWL DATA	
BOWL NUMBER	3864
BOWL MAX. DIAMETER	9.875 IN.
BOWL MIN. DIAMETER	9.500 IN.
MAX. NO. STAGES	26
ONE STAGE WEIGHT	250 LB.
ADD STAGE WEIGHT	60 LB.
STD. SHAFT DIA.	1.688 IN.
STD. LATERAL	0.500 IN.
DISCHARGE SIZE	6 - 8 IN.
DISCHARGE CONNECTION	THD - FLG
SUCTION SIZE	6 - 8 IN.
SUCTION CONNECTION	THD
MAX. SPHERE SIZE	1.438 IN.
MAX. OPERATIONAL P.S.I.	455 (SPECIAL)

Performance based on pumping clear, fresh water at a temperature not over 85° F., free of gas, air or abrasives and with bowls properly adjusted and submerged. Performance curve reflects Hydraulic Institute tolerances and guidelines.