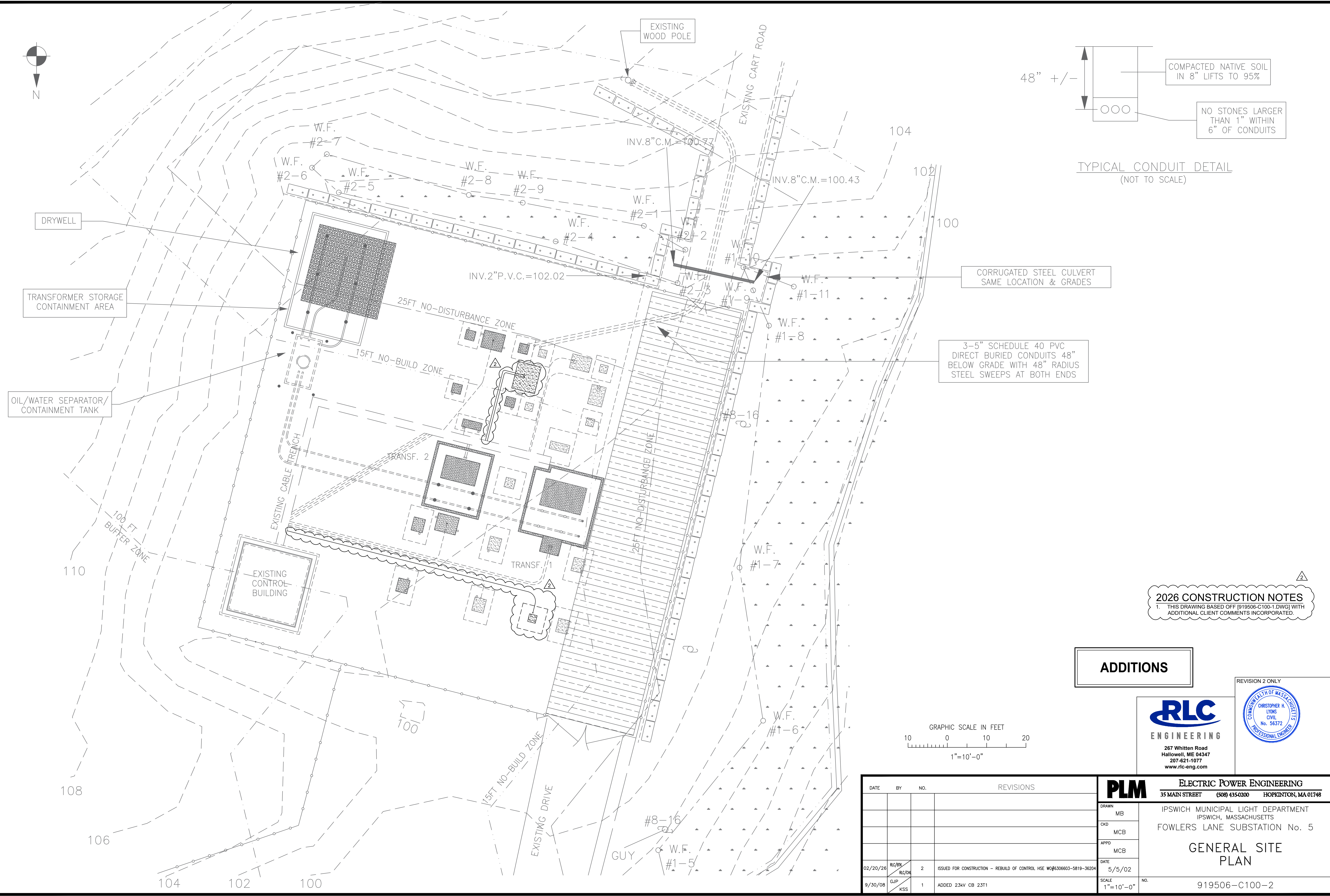
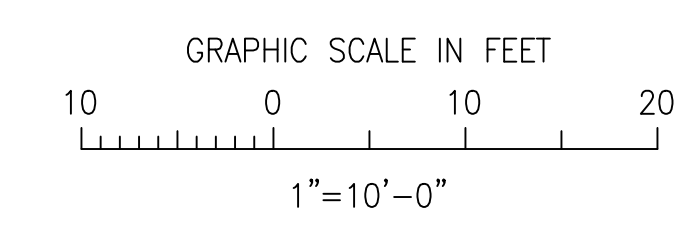


TYPICAL CONDUIT DETAIL
(NOT TO SCALE)



2026 CONSTRUCTION NOTES
1. THIS DRAWING BASED OFF [919506-C100-1.DWG] WITH ADDITIONAL CLIENT COMMENTS INCORPORATED.

ADDITIONS



REVISION 2 ONLY

267 Whitten Road
Hallowell, ME 04347
207-621-1077
www.rlc-eng.com

REVISIONS				DATE	
NO.	BY	DATE	DESCRIPTION	DATE	NO.
2	RLC/MB	02/20/26	ISSUED FOR CONSTRUCTION - REBUILD OF CONTROL HSE WO#6306603-5819-36204	5/5/02	
1	GUP/KSS	9/30/08	ADDED 23KV CB 23T1		

PLM ELECTRIC POWER ENGINEERING 35 MAIN STREET (508) 435-0200 HOPKINTON, MA 01748	DRAWN MB CRD MCB APPD MCB	IPSWICH MUNICIPAL LIGHT DEPARTMENT IPSWICH, MASSACHUSETTS FOWLERS LANE SUBSTATION No. 5 GENERAL SITE PLAN
	DATE 5/5/02 SCALE 1"=10'-0"	
		NO. 919506-C100-2