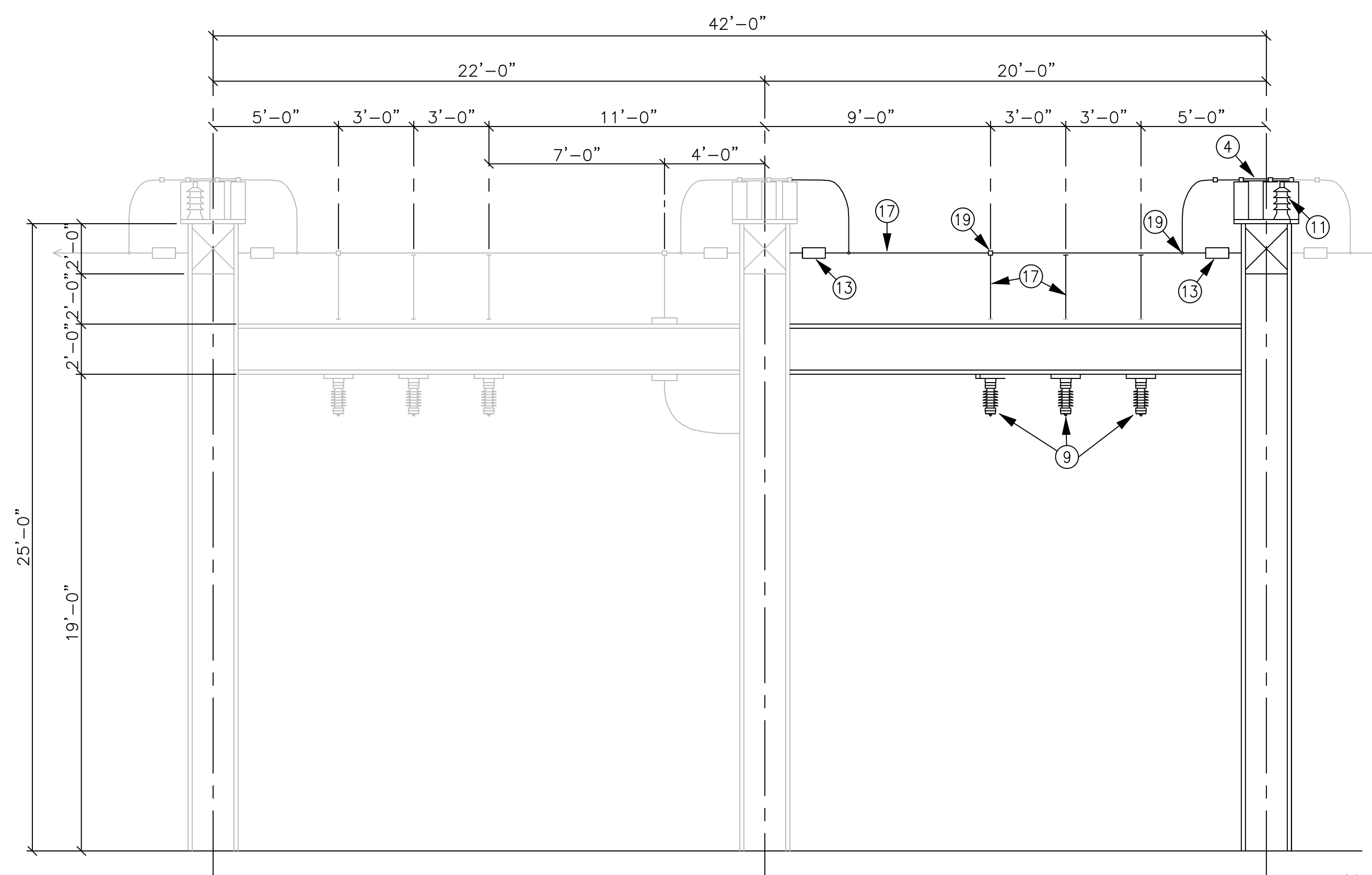


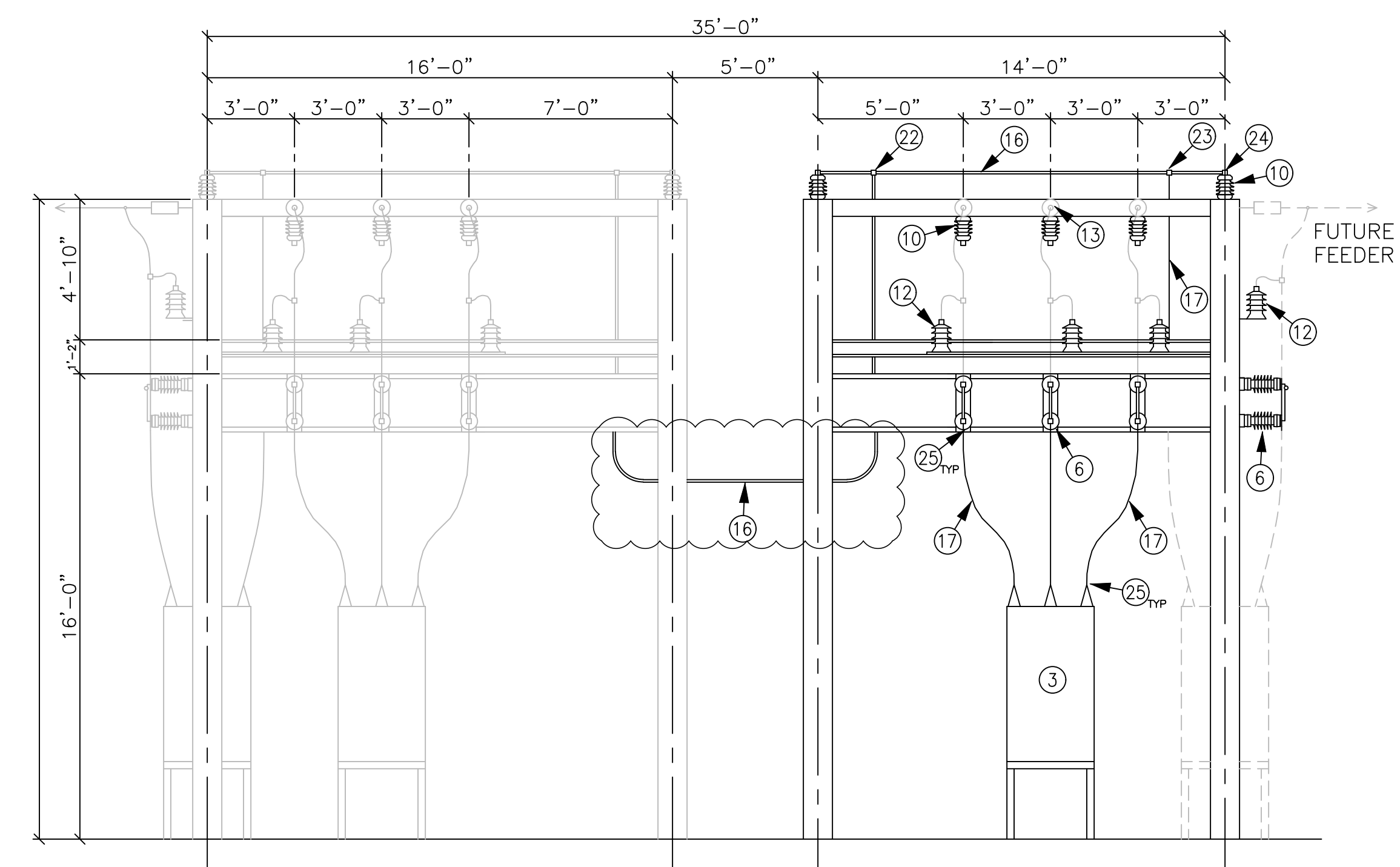
SECTION C  
E100



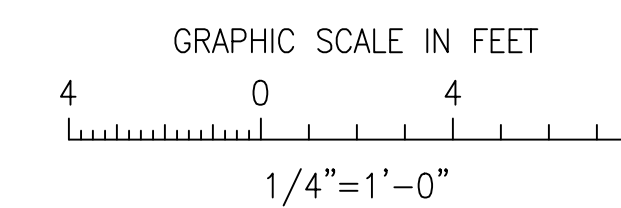
SECTION D  
E100

NOTES:

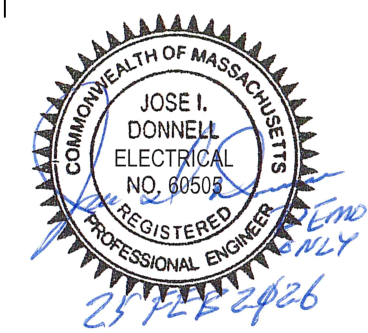
- 1) SCOPE OF CONTRACT SHOWN AS BOLD AND CIRCLED. EQUIPMENT SHOWN AS GREY NOT IN CONTRACT.
- 2) INCOMING 23 KV & OUTGOING 13.2 KV LINES, DEADEND INSULATORS & HARDWARE BY OWNER. CONTRACTOR TO PROVIDE ATTACHMENT FOR STANDARD DISTRIBUTION DEADEND STRAIN INSULATORS.
- 3) 25 KV SWITCHING BAY TO BE ADDED TO EXISTING STRUCTURE. CONTRACTOR TO FIELD VERIFY ATTACHMENT DETAILS.



SECTION E  
E100



DEMOLITION DRAWING



**RLC**  
ENGINEERING  
267 Whitten Road  
Hallowell, ME 04347  
207-621-1077  
www.rlc-eng.com

DATE	BY	NO.	REVISIONS

<b>PLM</b> ELECTRIC POWER ENGINEERING	
35 MAIN STREET (508) 435-0200 HOPKINTON, MA 01748	
DRAWN KSS	IPSWICH MUNICIPAL LIGHT DEPARTMENT IPSWICH, MASSACHUSETTS FOWLERS LANE SUBSTATION No. 5 ELECTRICAL ARRANGEMENT SECTIONS SHEET 2 OF 3
CHKD MCB	
APPD	
DATE 10/19/00	
SCALE 1/4"=1'-0"	NO. 919506-E111-DEMO