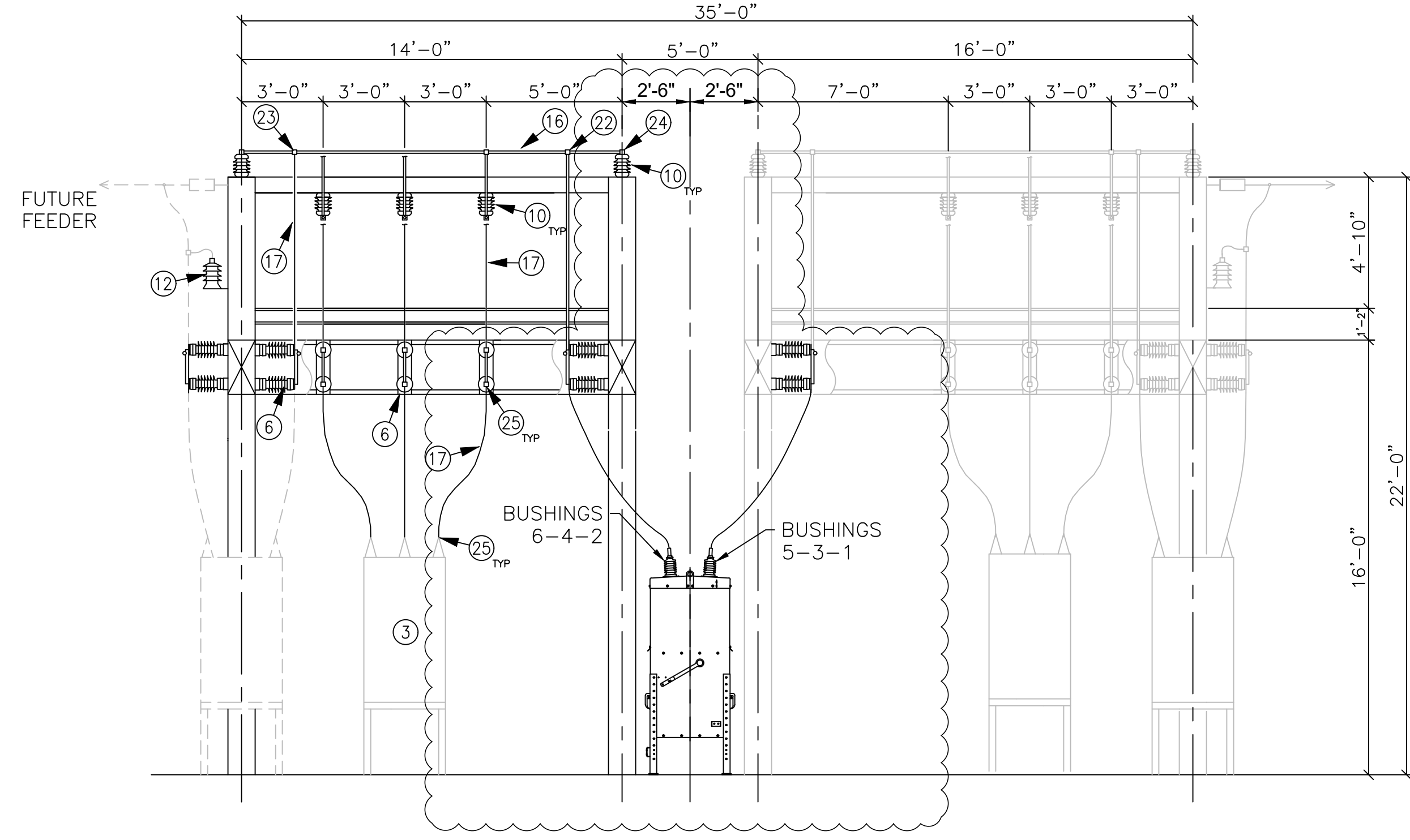
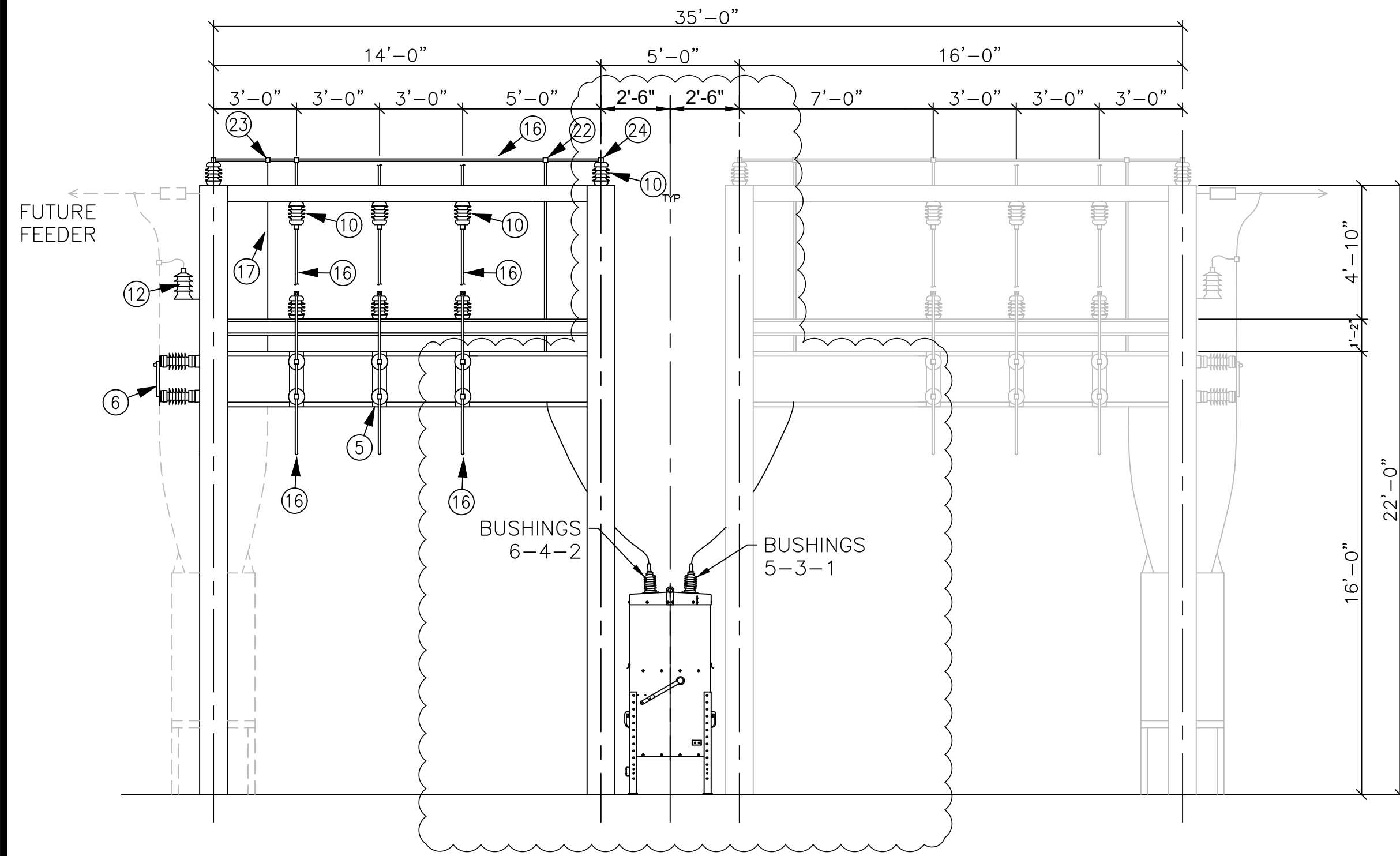


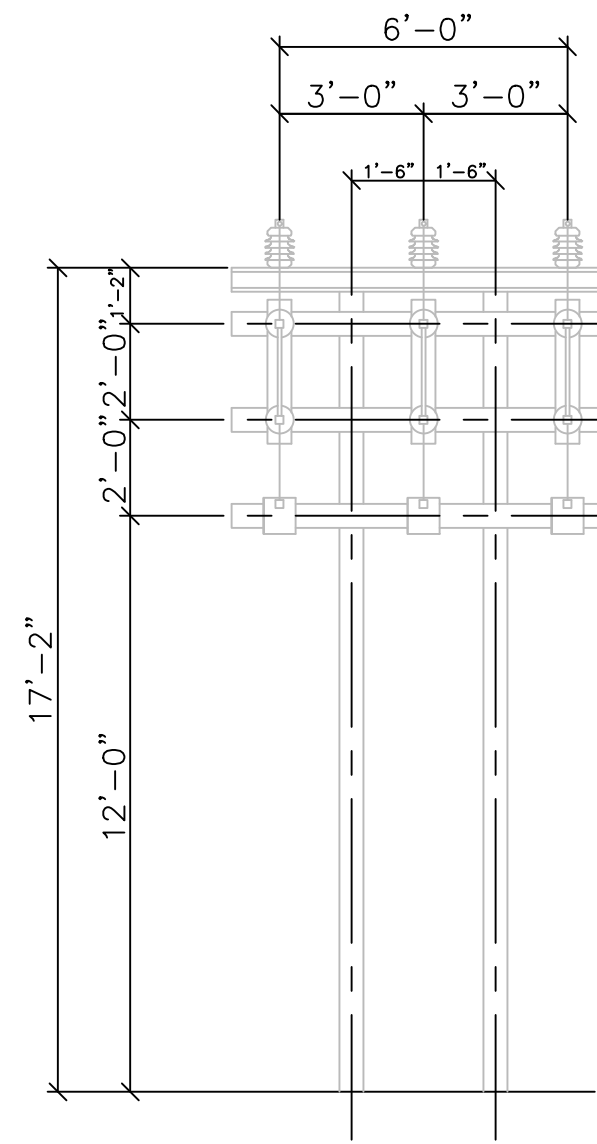
SECTION F
E100



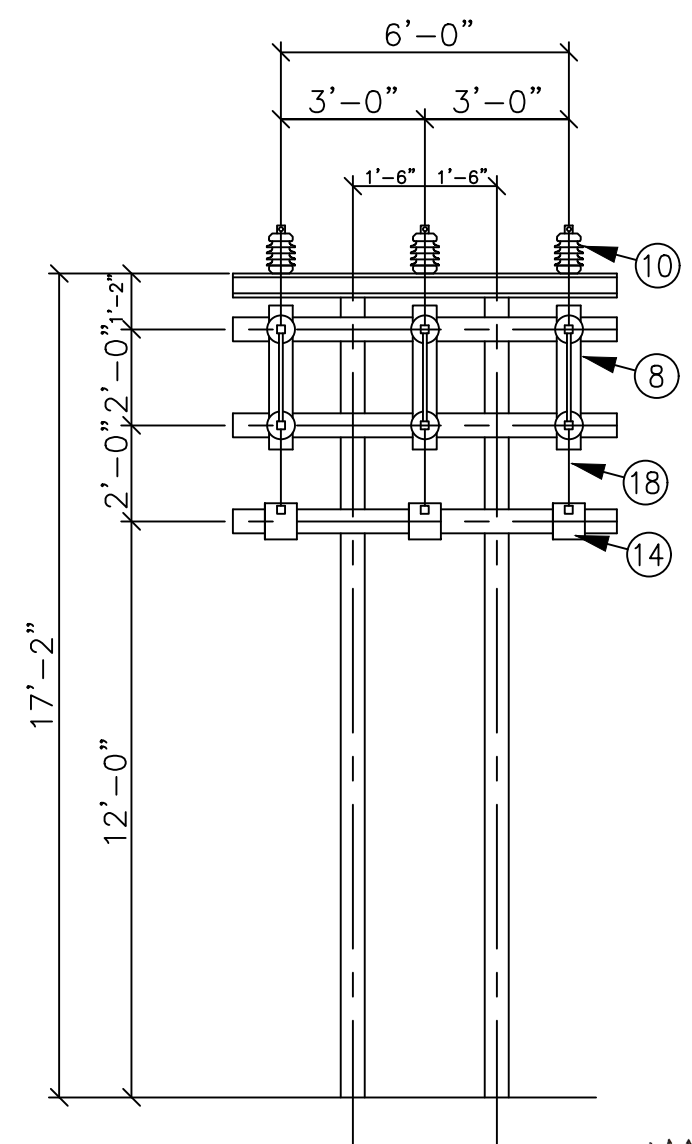
SECTION G
E100



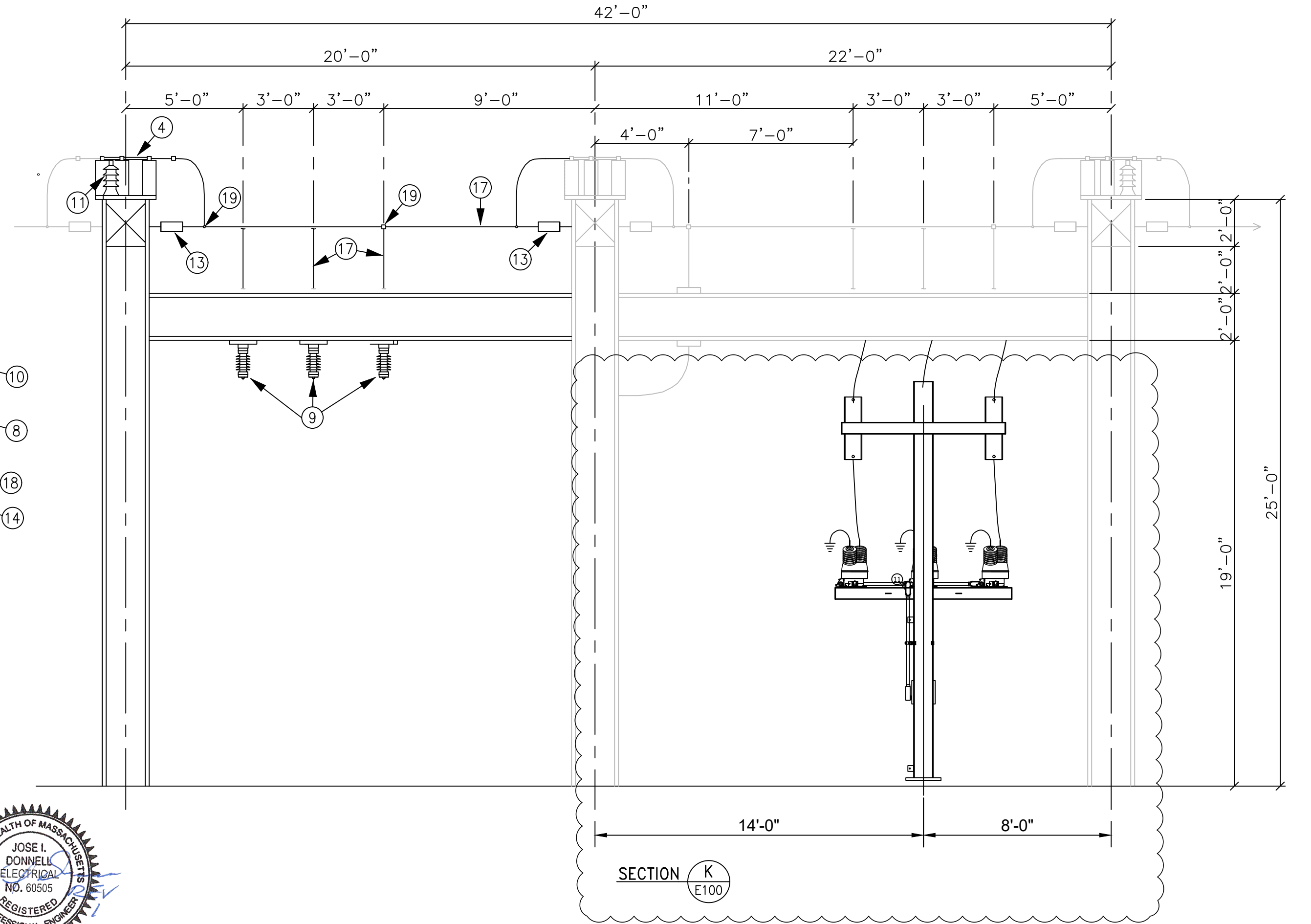
SECTION H
E100



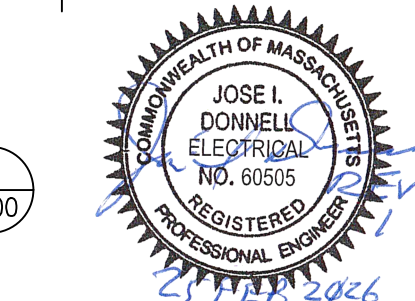
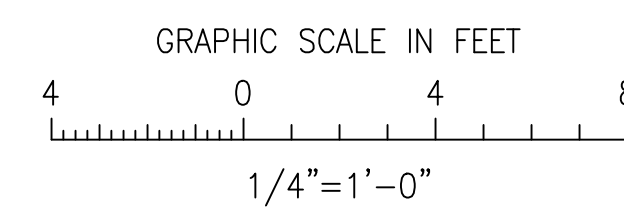
SECTION I
E100



SECTION J
E100



SECTION K
E100



RLC
ENGINEERING
267 Whitten Road
Hallowell, ME 04347
207-621-1077
www.rlc-eng.com

DATE	BY	NO.	REVISIONS
02/20/26	RLC/BD	1	ISSUED FOR CONSTRUCTION - REBUILD OF CONTROL HSE W#6306603-5819-38204

PLM ELECTRIC POWER ENGINEERING
35 MAIN STREET (508) 435-0200 HOPKINTON, MA 01748

DRAWN: KSS
CHKD: MCB
APPD: APPD

DATE: 10/19/00
SCALE: 1/4"=1'-0"

IPSWICH MUNICIPAL LIGHT DEPARTMENT
IPSWICH, MASSACHUSETTS
FOWLERS LANE SUBSTATION No. 5
ELECTRICAL ARRANGEMENT
SECTIONS
SHEET 3 OF 3

NO. 919506-E112-1