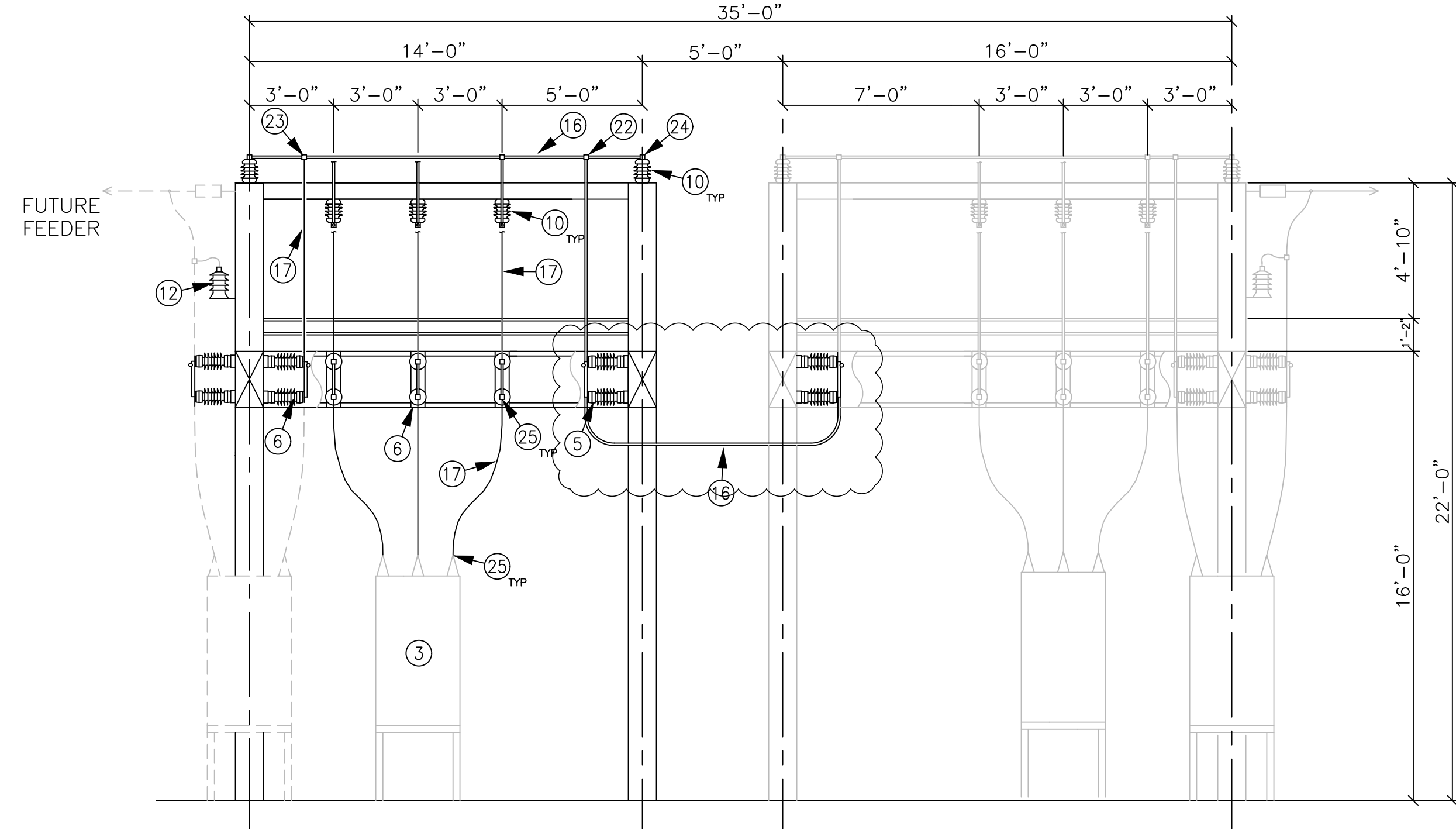
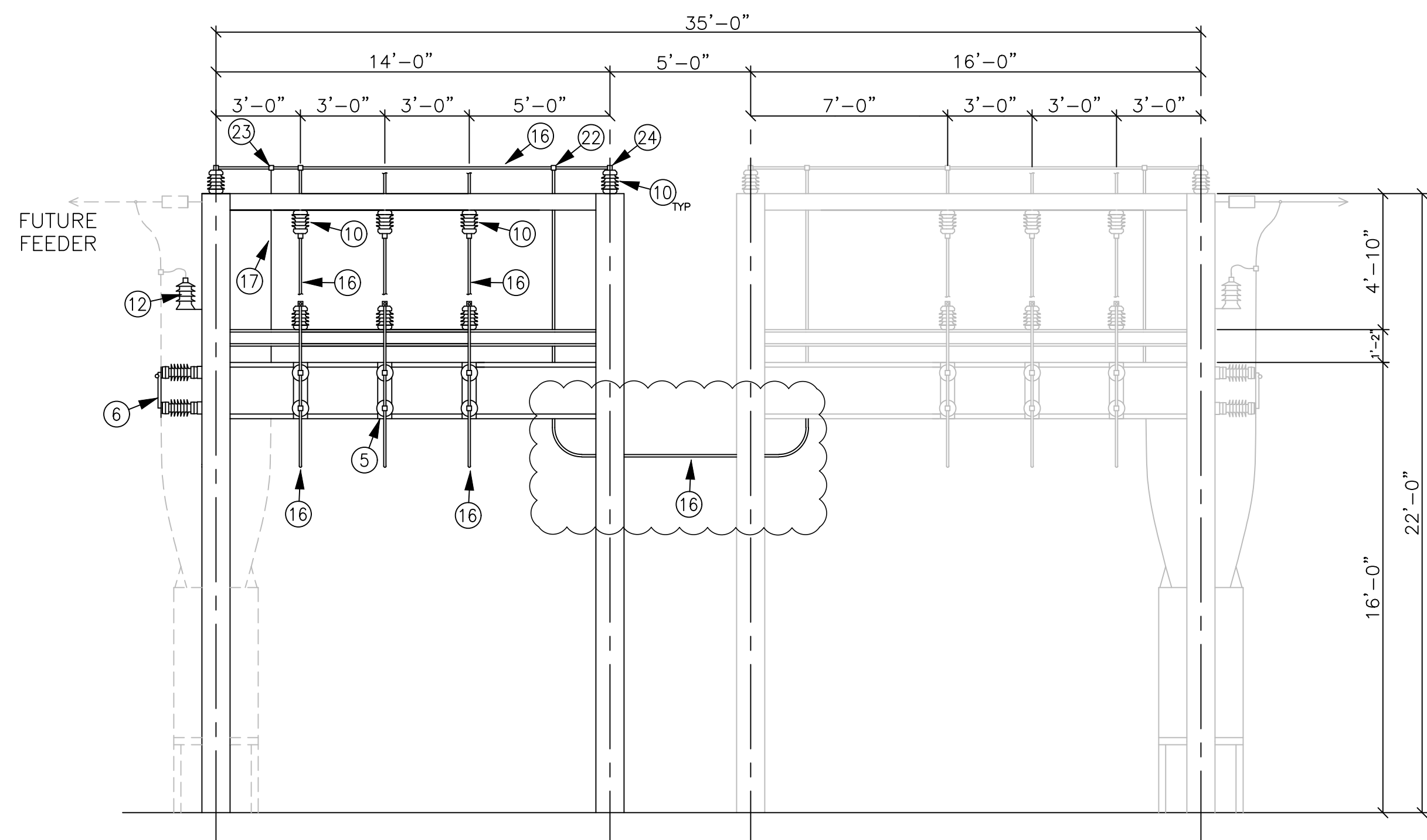


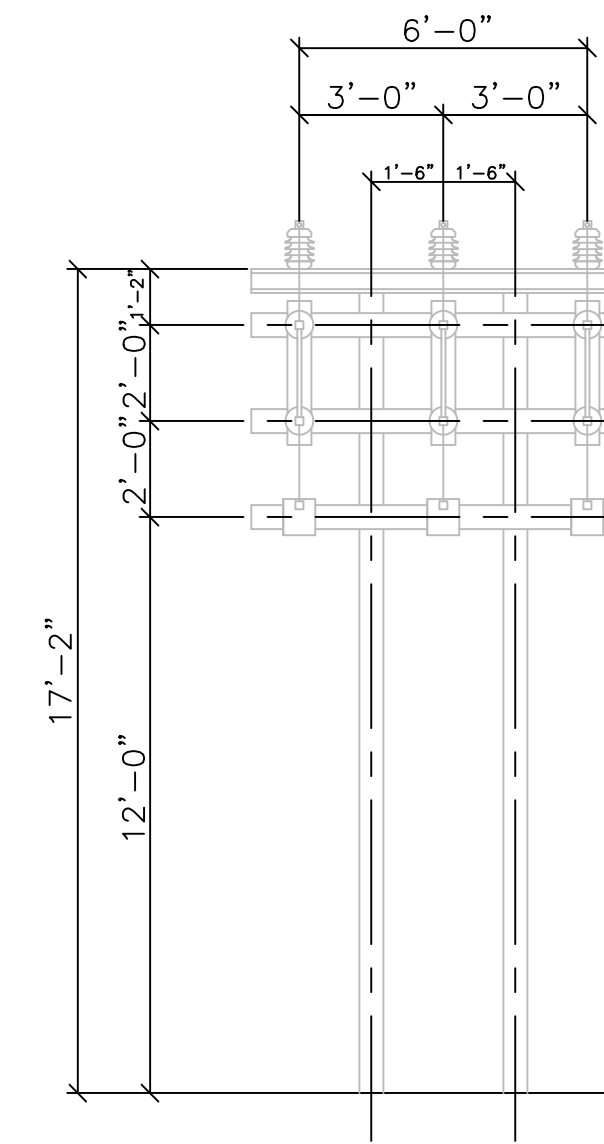
SECTION **F**
E100



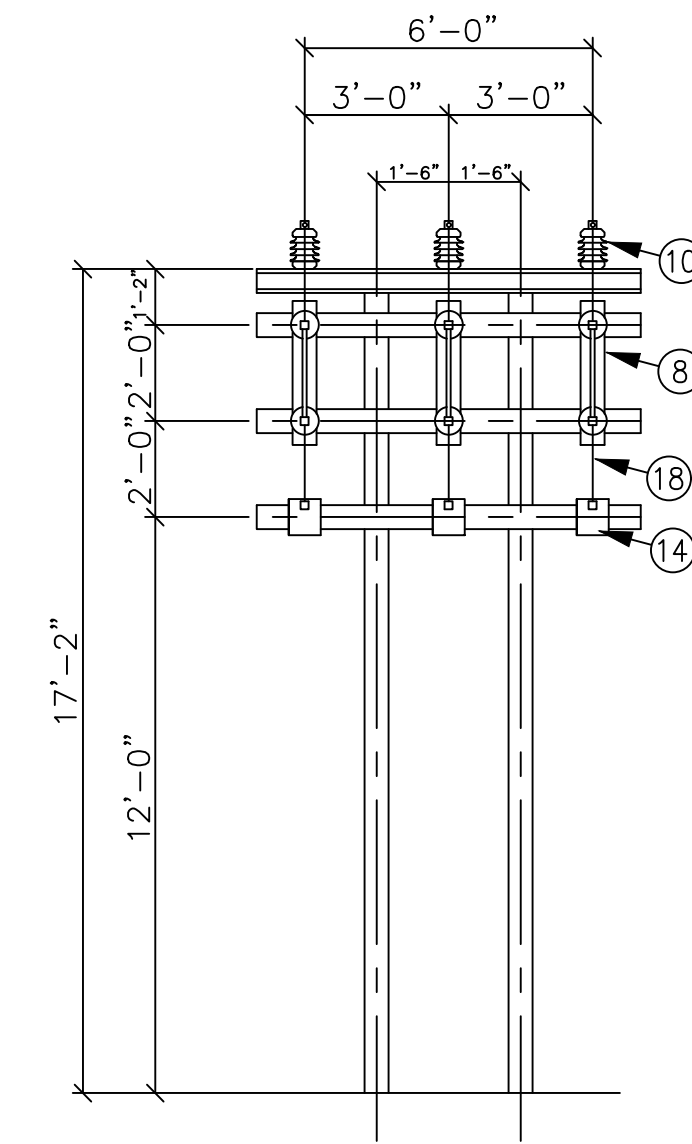
SECTION **G**
E100



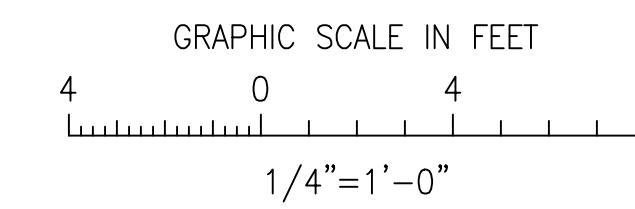
SECTION **H**
E100



SECTION **I**
E100



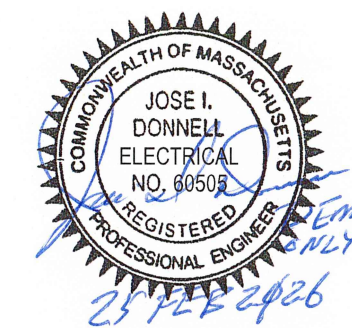
SECTION **J**
E100



DEMOLITION DRAWING

NOTES:

- SCOPE OF CONTRACT SHOWN AS BOLD AND CIRCLED. EQUIPMENT SHOWN AS GREY NOT IN CONTRACT.
- INCOMING 23 KV & OUTGOING 13.2 KV LINES, DEADEND INSULATORS & HARDWARE BY OWNER. CONTRACTOR TO PROVIDE ATTACHMENT FOR STANDARD DISTRIBUTION DEADEND STRAIN INSULATORS.



RLC
ENGINEERING

267 Whitten Road
Hallowell, ME 04347
207-621-1077
www.ric-eng.com

DATE	BY	NO.	REVISIONS

PLM ELECTRIC POWER ENGINEERING
35 MAIN STREET (508) 435-0200 HOPKINTON, MA 01748

DRAWN: KSS
CHKD: MCB
APPD:

DATE: 10/19/00
SCALE: 1/4"=1'-0"

IPSWICH MUNICIPAL LIGHT DEPARTMENT
IPSWICH, MASSACHUSETTS
FOWLERS LANE SUBSTATION No. 5
ELECTRICAL ARRANGEMENT SECTIONS
SHEET 3 OF 3

NO. 919506-E112-DEMO