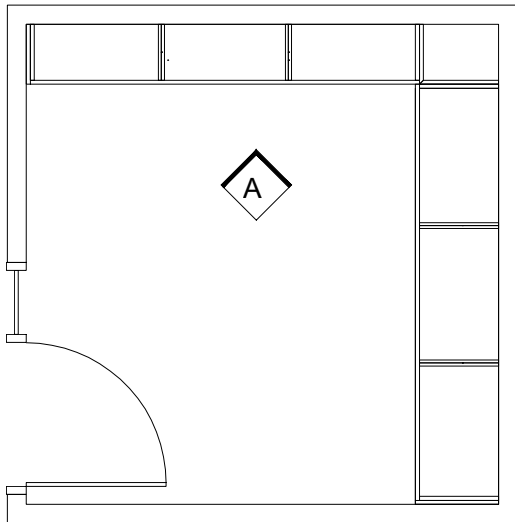


EXHIBIT 1

AV List for Meetings Areas (Conference/Training/Classroom)

- Two TV/Presentation monitors with soundbars in training room (proportionate to room dimensions)
- Two TV/Presentation monitors with surround sound audio system in classroom (proportionate to room dimensions)
- Two TV/Presentation monitors with Logitech Rally Bar in small conference room (proportionate to room dimensions)
- Two TV/Presentation monitors with Logitech Rally Bar in large conference room (proportionate to room dimensions)
- One Logitech Tap in each meeting area (Conference/Training/Classrooms)
- One smart whiteboard located in the classroom (proportionate to room dimensions)
- One smart whiteboard located in the training room (proportionate to room dimensions)

TECHNICAL EXHIBIT #3



PLAN

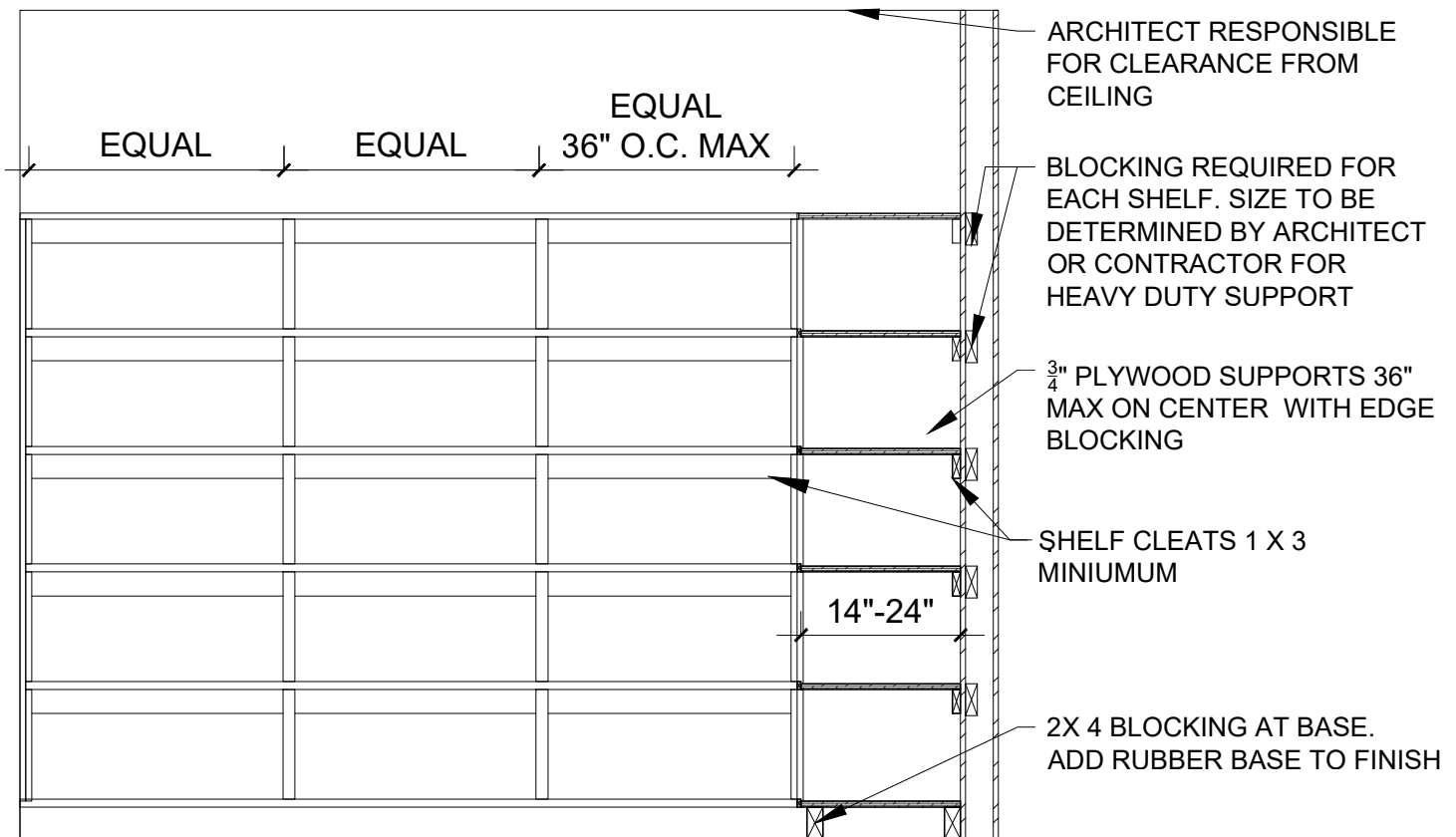
SCALE 1/4" = 1'-0"

NOTES

1. TYPICAL SHELVING 14" AND 24" DEEP. TYPICAL DISTANCE BETWEEN SHELVES 14". QUANTITY OF SHELVES TO BE DETERMINED BY AGENCY.
2. SHOP DRAWINGS REQUIRED FOR FINAL APPROVAL. DIMENSIONS TO BE APPROVED BY DCAMM/UA PRIOR TO SUBMITTAL PROCESS.
3. 3/4" PLYWOOD SHELF WITH MINIMUM 1/4" LIP ON FRONT OF SHELF FOR BLOCKING AND TO SECURE ITEMS ON SHELF'
4. CONTRACTOR RESPONSIBLE TO ADD BLOCKING AS NEEDED.
5. WHEN SHELVING IS BACK TO BACK PROVIDE CONSTRUCTION GRADE 5/8" PLYWOOD THE ENTIRE LENGTH OF BACK TO BACK SHELVING.
6. WOOD TO BE PAINT GRADE AND SEALED PRIOR TO PAINTING. EDGE BANDING REQUIRED ON ALL PLYWOOD EDGES

NOTE DRAWING IS FOR REFERENCE ONLY

ARCHITECT IS RESPONSIBLE TO VERIFY DIMENSIONS AND CODE COMPLIANCE. ALL GOVERNMENT PROPERTIES ARE TO COMPLY WITH ADA GUIDELINES



ELEVATION A

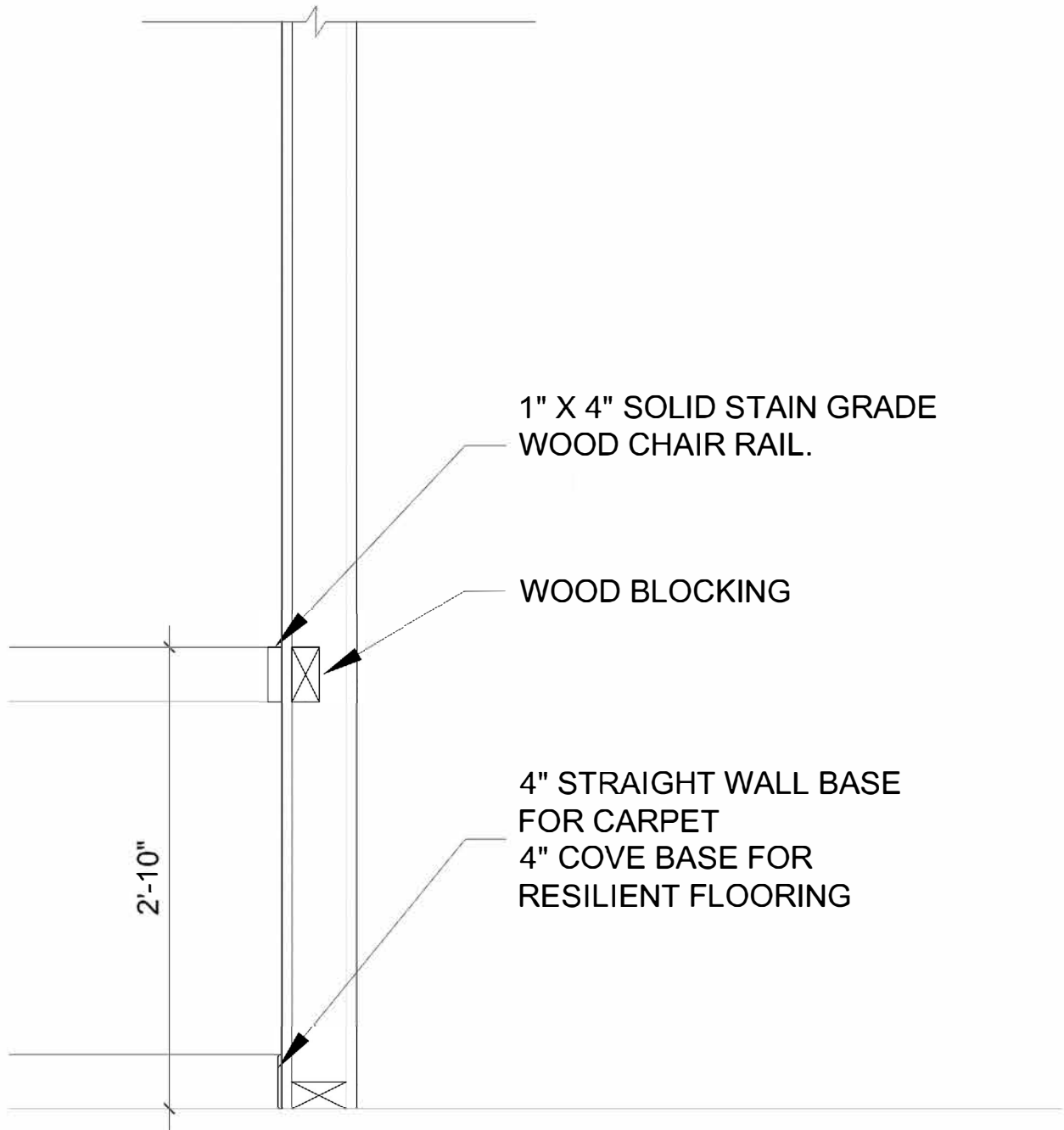
SCALE 1/2" = 1'-0"

PERIMETER SHELVING

SCALE AS NOTED
 DATE 02/11/2026
 CREATED BY: BRK
 CHECKED BY:



TECHNICAL EXHIBIT # 4



NOTE EXHIBITS ARE FOR REFERENCE ONLY. CONTRACTOR IS RESPONSIBLE TO MEET APPLICABLE CODES INCLUDING ADA COMPLIANCE



TYPICAL CHAIR RAIL DETAIL

SCALE 1"= 1'-0"
DATE 03/02/ 2026
CREATED BY: BRK
CHECKED BY:

TECHNICAL EXHIBIT # 5

EXECUTIVE OFFICE OF HEALTH AND HUMAN SERVICES

AGENCY NAME



OFFICE/LOCATION NAME

- WHITE OR SILVER DIE-CUT VINYL LETTERS
- SIZE TO WALL/ DOOR
- PROVIDE PROOF FOR APPROVAL TO USER AGENCY
- WALL COLOR TO BE DETERMINED

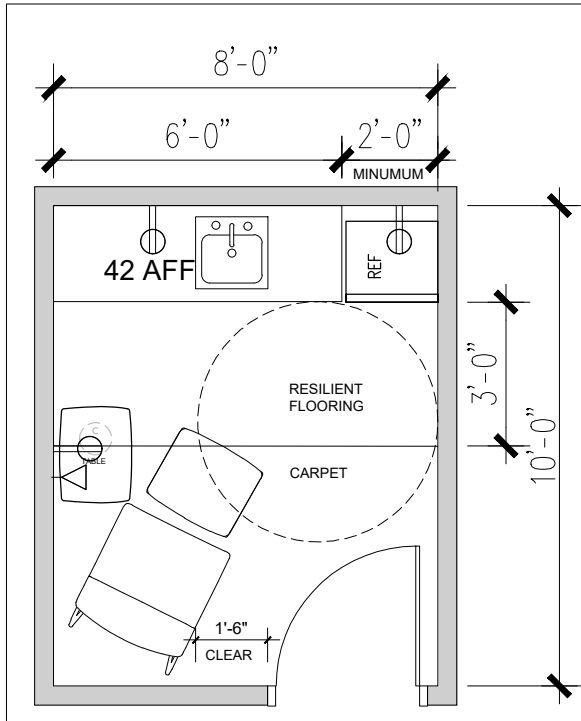
NOTE EXHIBITS ARE FOR REFERENCE ONLY. CONTRACTOR IS RESPONSIBLE TO MEET APPLICABLE CODES INCLUDING ADA COMPLIANCE



TYPICAL TITLE WALL

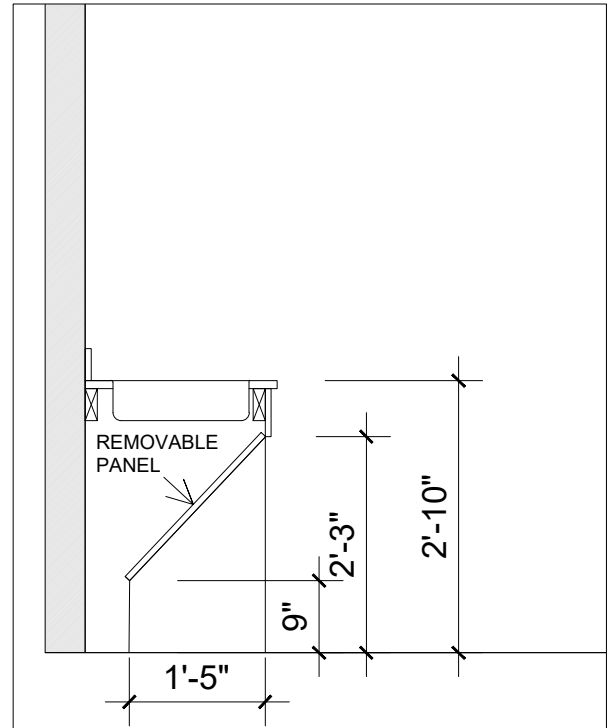
SCALE NTS
DATE 03/02/ 2026
CREATED BY: BRK
CHECKED BY:

TECHNICAL EXHIBIT #13




PLAN TYPICAL 80 SQ FT

SCALE 1/4" = 1'-0"



SINK SECTION

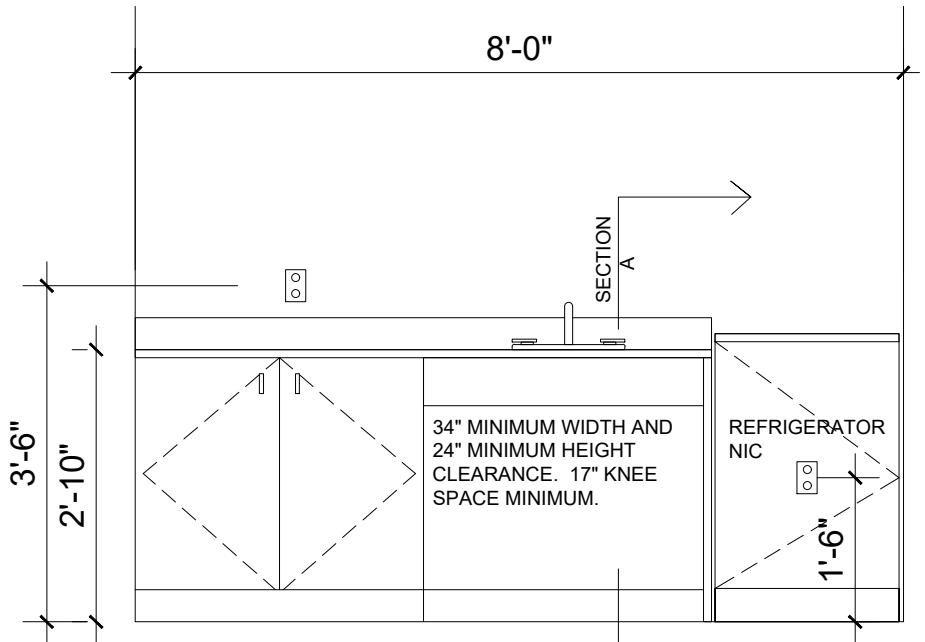
SCALE 1/2" = 1'-0"

 DUPLEX ELECTRICAL
OUTLET
18" AFF UNLESS NOTED

 DATA OUTLETS. 2 PER
OUTLETS PER
LOCATION

WELLNESS ROOM NOTES

- FURNITURE SHOWN TO BE PROVIDED BY TENANT
- LIGHTS TO BE DIMMABLE
- FLOORING AT SINK TO BE RESILIENT FLOORING
- IF SIDE LIGHT PROVIDED ENTIRE WINDOW TO BE PRIVACY FILM
- MIRROR & BULLETIN BOARD NOT PROVIDED BY CONTRACTOR



ELEVATION OF MILLWORK WELLNESS ROOM

SCALE 1/2" = 1'-0"

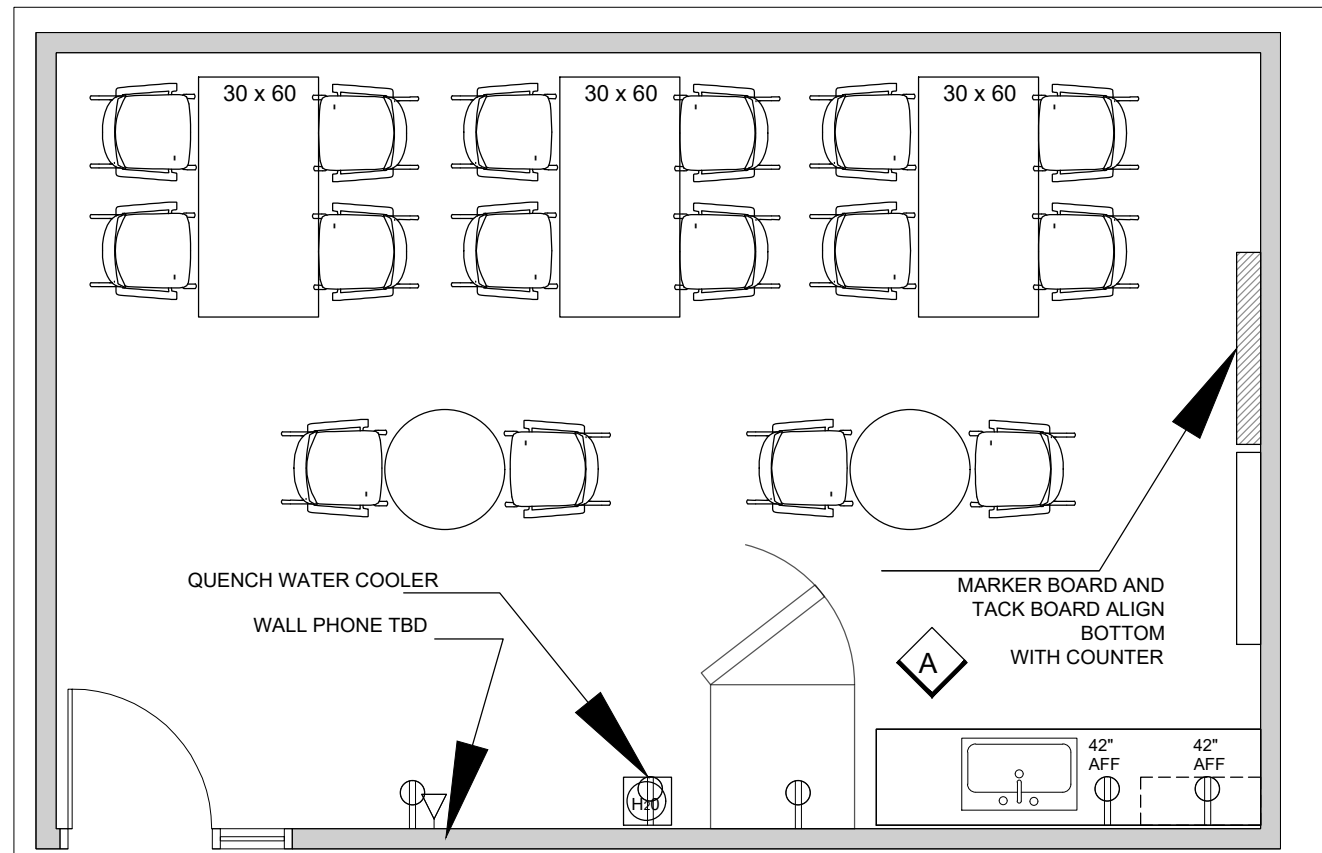
EXHIBITS ARE FOR REFERENCE ONLY. CONTRACTOR IS RESPONSIBLE TO MEET APPLICABLE CODES



WELLNESS ROOM

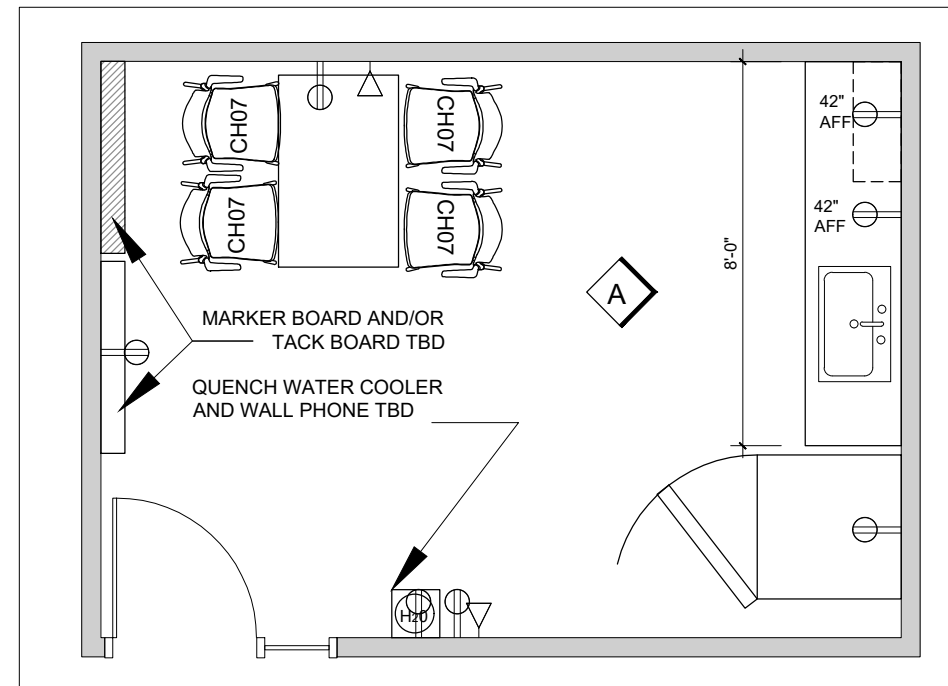
SCALE as noted
DATE 10/07/2025
CREATED BY: BK
CHECKED BY : CB and EA

TECHNICAL EXHIBIT #14



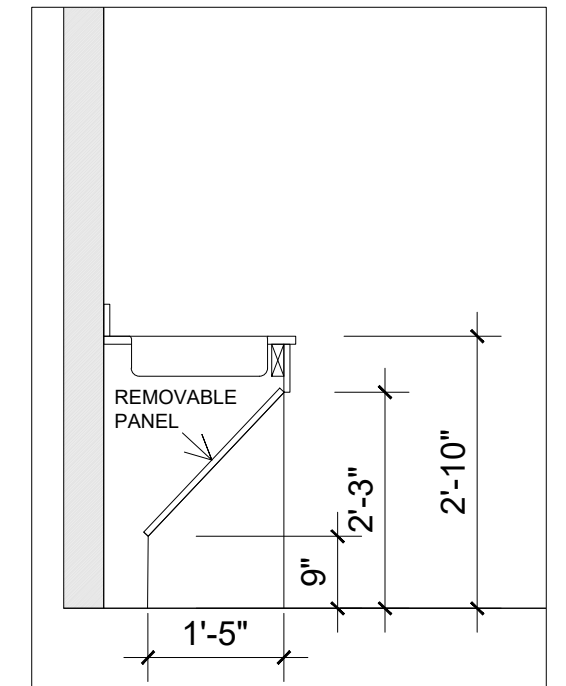
TYPICAL PLAN 400 SQ FT STAFF SUPPORT SPACE

SCALE 1/4" = 1'-0"



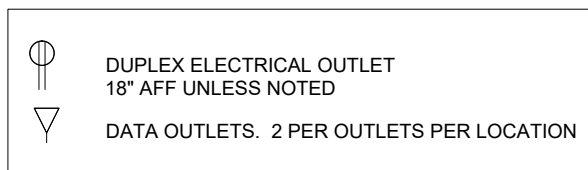
TYPICAL PLAN 200 SQ FT STAFF SUPPORT SPACE

SCALE 1/4" = 1'-0"



SINK SECTION A

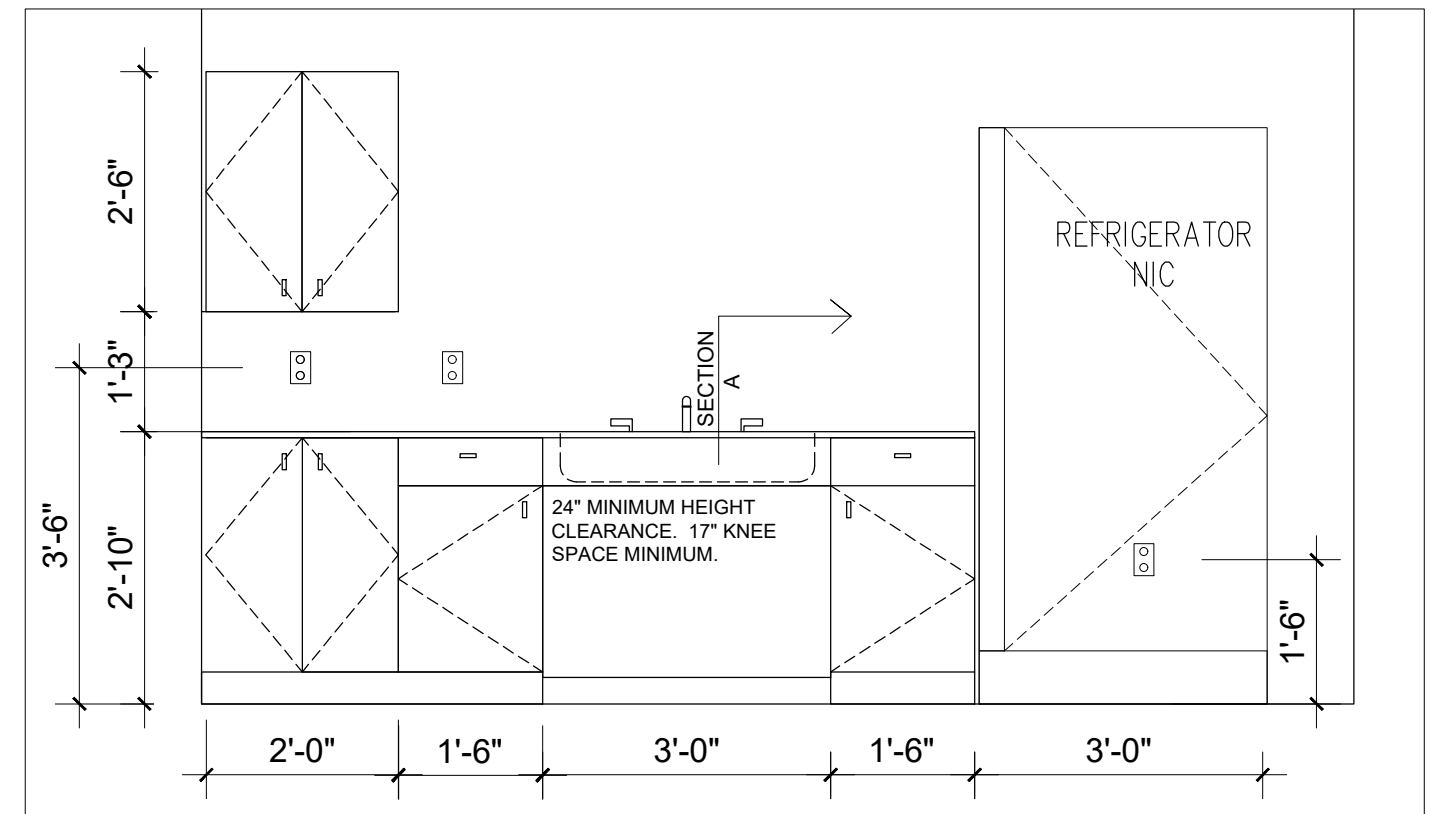
SCALE 1/2" = 1'-0"



PLAN KEY

NOTES

PLANS SHOW PREFERRED OPTION FOR QUENCH WATER COOLERS BY MOST AGENCIES. VALIDATE LOCATION WITH AGENCY. SOME AGENCIES PREFER COUNTER TOP OPTIONS WHEN SPACE PERMITS



ELEVATION A OF MILLWORK STAFF SUPPORT ROOM

SCALE 1/2" = 1'-0"

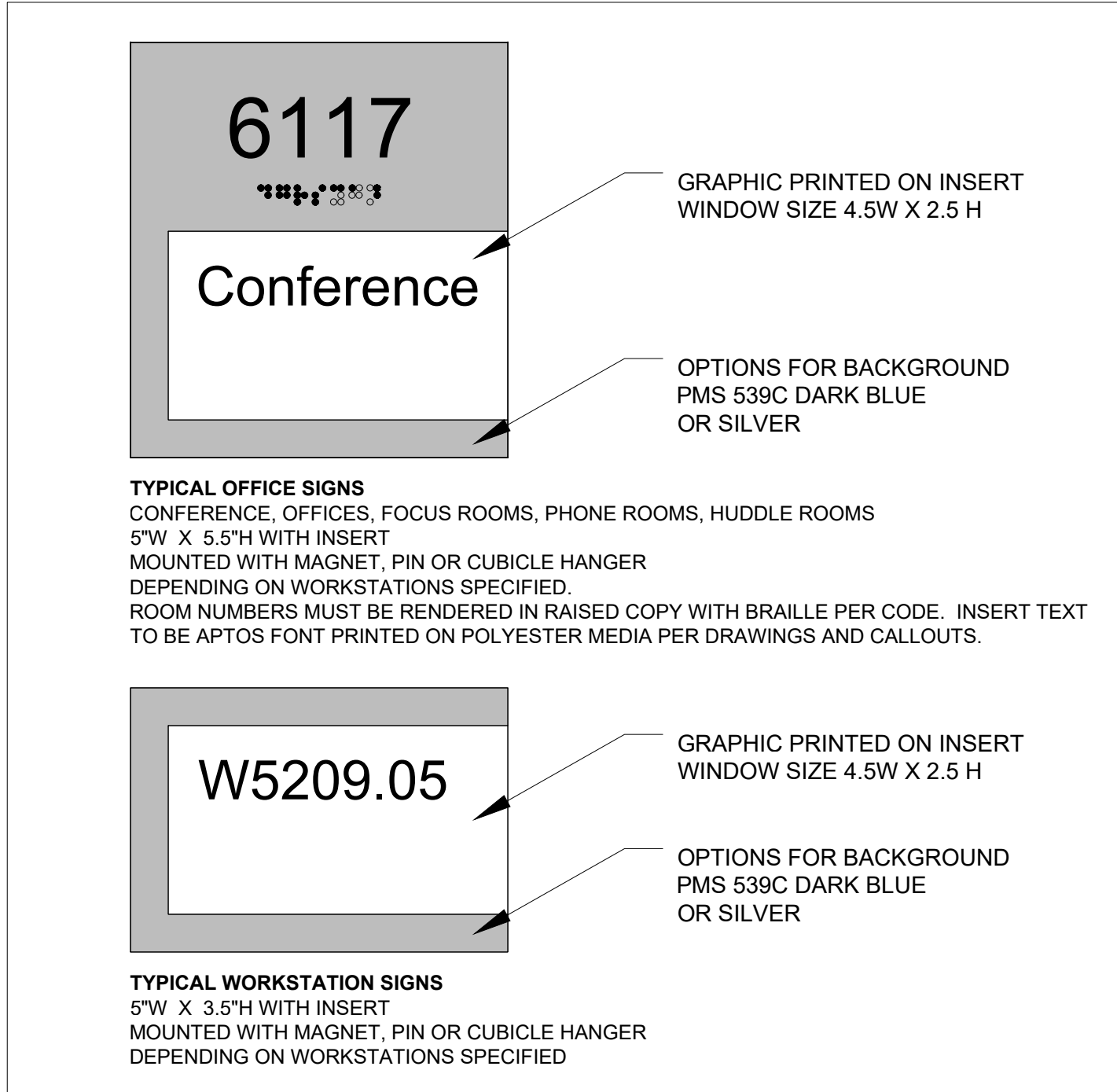
NOTE EXHIBITS ARE FOR REFERENCE ONLY. CONTRACTOR IS RESPONSIBLE TO MEET APPLICABLE CODES INCLUDING ADA COMPLIANCE



STAFF SUPPORT

SCALE AS NOTED
DATE 06/06/2025
CREATED BY: BRK
CHECKED BY: CB

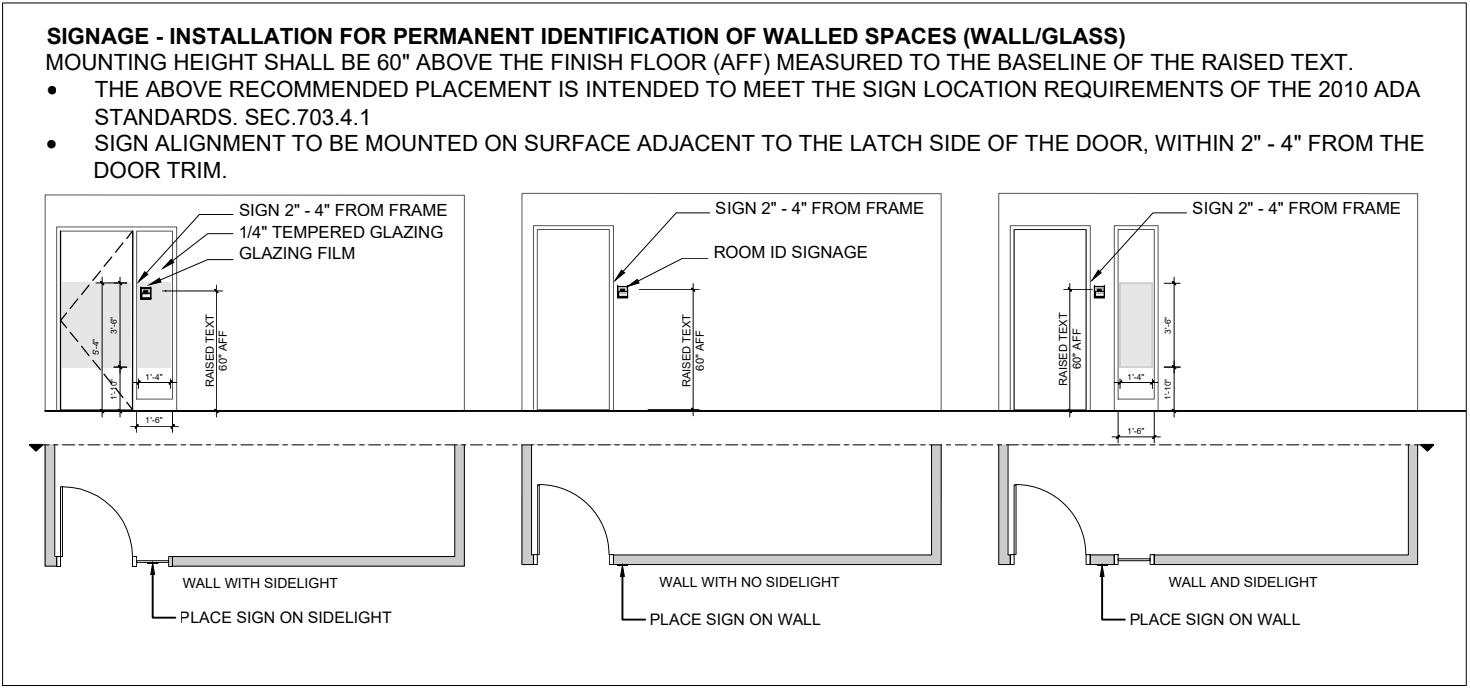
TECHNICAL EXHIBIT #15



DETAILS

SCALE 6" = 1'-0"

NOTE EXHIBITS ARE FOR REFERENCE ONLY. CONTRACTOR IS RESPONSIBLE TO MEET APPLICABLE CODES



ELEVATIONS

SCALE 1/8" = 1'-0"

NOTES

INTERIOR SIGNAGE STANDARDS
 NOTE BACKERS REQUIRED WHEN MOUNTED ON GLASS. BACKER COLOR TO BE CONFIRMED BY AGENCY. CONTRACTOR RESPONSIBLE TO MEET ADA COMPLIANCE ON ALL SIGNS. INCLUDING INSTALLATION. ROOM NUMBERS MUST BE RENDERED IN RAISED COPY WITH BRAILLE PER CODE AND DRAWINGS ABOVE. INSERT TEXT TO BE APTOS FONT PRINTED ON POLYESTER MEDIA PER DRAWINGS AND CALLOUTS. ALL SIGNS TO BE POSTED BY CONTRACTOR. ADDITIONAL MATERIAL AND PRINTING INSTRUCTIONS TO BE SUPPLIED TO AGENCY FOR FUTURE SIGNS.

SIGNS CAN BE PURCHASED THROUGH TAKEFORM STYLE VIVID (TAKEFORM.NET). ORDERS AND QUESTIONS CAN BE PLACED BY EMAILING MIKE R. HUNGERFORD 1.800.528.1398 MRH@TAKEFORM.NET. FINAL SIGNAGE OPTIONS AND SIGNS TO BE SUBMITTED TO DCAMM PROJECT MANGER FOR APPROVAL.

TAKEFORM ROOM SIGNS ARE TYPE J.3B VVAW-01001105-R9D01. TAKEFORM COLROS DARK BLUE PMS 539C OR SILVER CMYK 8,9,5,35
 TAKEFORM WORKSATION SIGNS ARE TYPE L.b VV1AW-01000701-R9D01

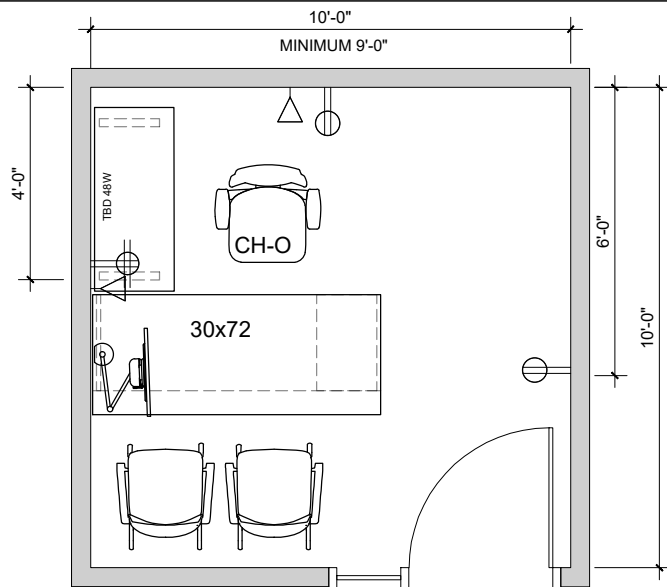
THIS IS FOR INTERNAL AGENCY SPACE ONLY. THESE SIGNS ARE NOT APPLICABLE FOR BATHROOM OR BUILDING CORE SIGNS

GLAZING FILM: 3M CRYSTAL, DUSTED (7725SE-314) OR EQUAL

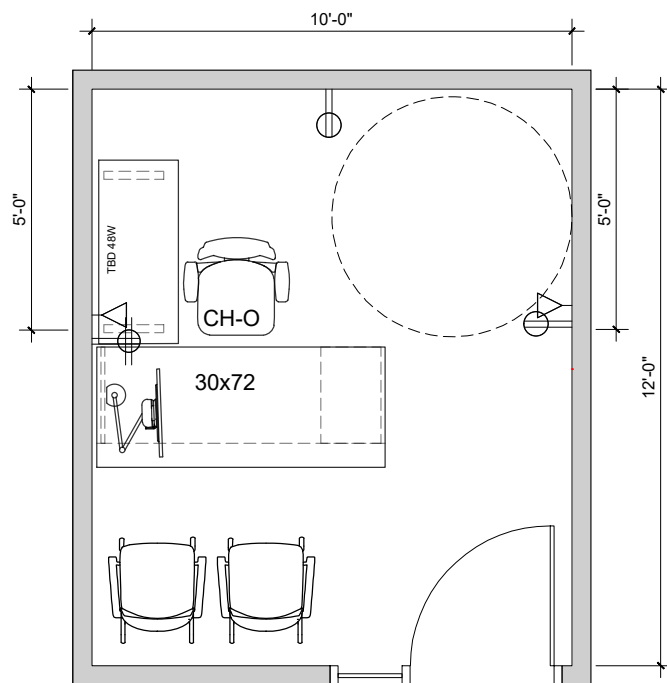
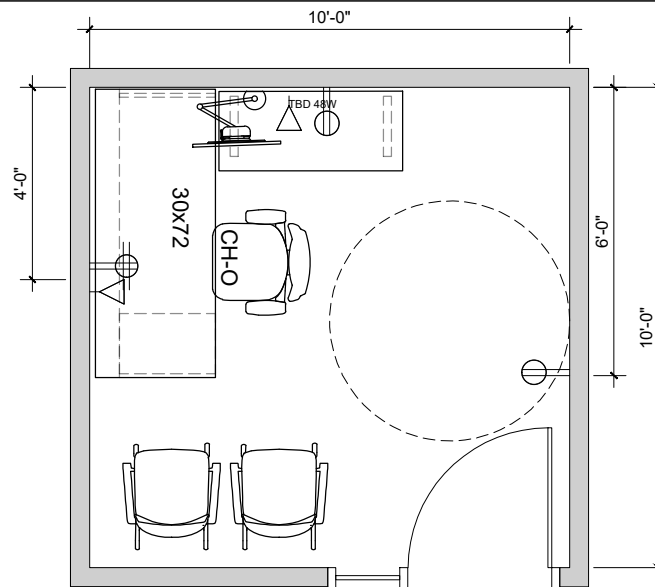
- GLAZING FILM TO BE INSTALLED ON THE ROOM SIDE OF THE GLAZING USING MANUFACTURER APPROVED PRODUCTS AND INSTALLATION INSTRUCTIONS. GLASS DOORS TO HAVE MATCHING FILM
- A MANUFACTURER APPROVED SIGNAGE BACKER SHALL BE MOUNTED ON THE ROOM SIDE OF THE GLAZING DIRECTLY BEHIND THE ROOM ID SIGNAGE. THE BACKER SHALL BE SIMILAR SIZE TO THE ROOM ID SIGNAGE SO THAT IT FULLY COVER THE BACK OF THE SIGNAGE. IF GLAZING FILM IS SPECIFIED, THE SIGNAGE BACKER SHALL BE MOUNTED ON TOP OF THE GLAZING FILM.



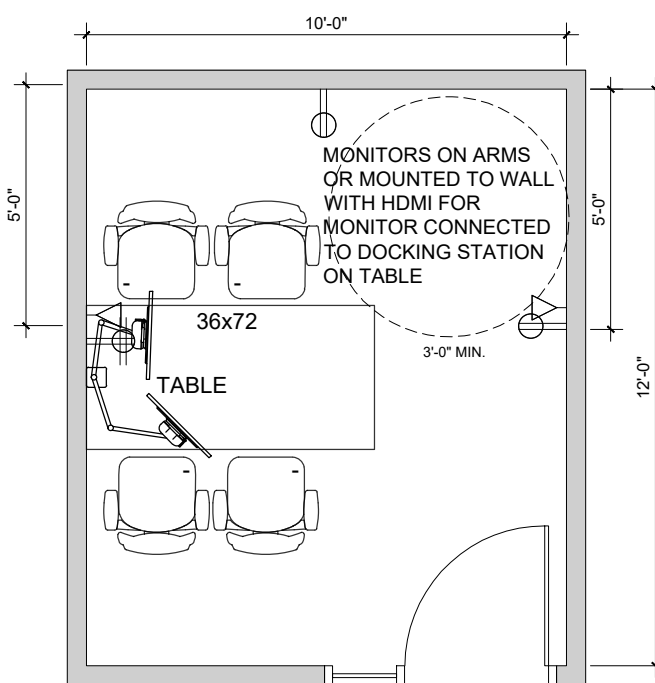
TECHNICAL EXHIBIT #17



TYPICAL OFFICE 100 SQ FT



TYPICAL OFFICE 120 SQ FT


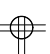



TYPICAL FLEX OFFICE OR HUDDLE 120 SQ FT

NOTES

- OUTLETS SHOWN ARE TO BE ALWAYS ON.
- SWITCHED OUTLETS TO BE CLEARLY NOTED
- MONITOR ARMS ARE SELECTED BY USER AGENCY.

EXHIBITS ARE FOR REFERENCE ONLY.
CONTRACTOR IS RESPONSIBLE TO MEET
APPLICABLE CODES INCLUDING ADA COMPLIANCE

-  DUPLEX ELECTRICAL OUTLET
18" AFF UNLESS NOTED
-  QUAD ELECTRICAL OUTLET 18" AFF
UNLESS NOTED. OUTLETS TO BE ALWAYS
ON.
-  DATA OUTLETS. 2 PER OUTLETS
PER LOCATION



TYPICAL OFFICE AND HUDDLE ROOMS

SCALE 1/4" = 1'- 0"
DATE 10/07/ 2025
CREATED BY: BRK
CHECKED BY: JW

TECHNICAL EXHIBIT # 18

- LOCKERS TO BE
MANUFACTURER GREAT OPENINGS
- TYPE TRACE CUBBY LOCKERS
METAL 4 HIGH UNITS
METAL DOORS
PULL SILVER OJMAR LOCK
- SIZE SINGLE UNITS 15" W X 18"D X 68.875H
DOUBLE UNITS 30"W X 18"D X 68.875H
- LOCK MECHANICAL LOCK, OJMAR COMBO PRO INCLUDE
MASTER KEY AND ADA HANDLE
- INCLUDE
- DOOR NAME PLATES 1" X 2" NUMBER PLATE WITH ADHESIVE BACK BRUSHED ALUMINUM WITH BLACK LETTERS LDNP0012
 - 3" LEVELERS
 - GANGING KIT
 - STANDARD FLAT TOP
 - LEFT VS RIGHT HINGES TO BE CONFIRMED



OJAMAR LOCK



SILVER METALLIC

FINISHES

LOCKERS 0666

NUMBERED PLATES
LOCK

ALUMINUM
SILVER



SINGLE UNIT



DOUBLE UNIT

NOTE EXHIBITS ARE FOR REFERENCE ONLY. CONTRACTOR IS RESPONSIBLE TO MEET APPLICABLE CODES INCLUDING ADA COMPLIANCE



SINGLE AND DOUBLE METAL LOCKERS

SCALE NTS

DATE 02/12/ 2026

CREATED BY: BRK

CHECKED BY: JM/KM